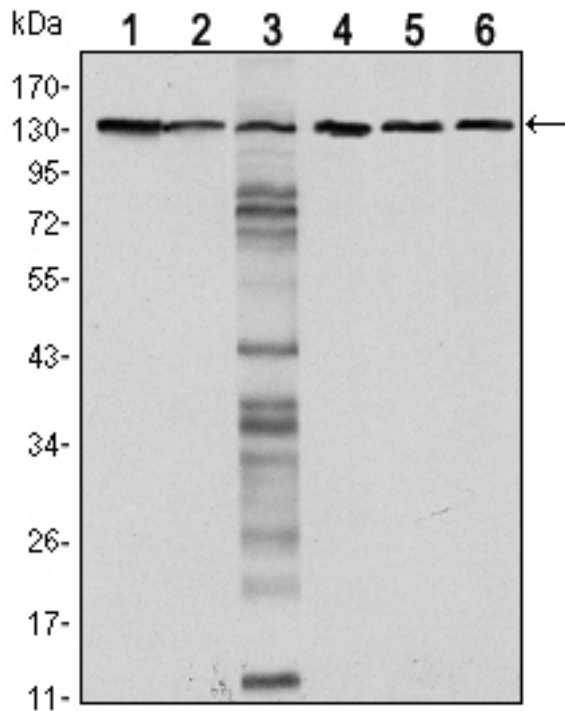


**CDH1 / E Cadherin Mouse anti-Human Monoclonal (7A2) Antibody - LS-C169277 - LSBio**

<b>CatalogID:</b>	LS-C169277
<b>Target:</b>	cadherin 1, type 1, E-cadherin (epithelial) (CDH1)
<b>Synonyms:</b>	CDH1 Antibody, CD324 Antibody, CDHE Antibody, Cell-CAM 120/80 Antibody, E Cadherin Antibody, E-Cadherin Antibody, ECAD Antibody, Epithelial cadherin Antibody, Arc-1 Antibody, UVO Antibody, Cadherin-1 Antibody, CAM 120/80 Antibody, CD324 antigen Antibody, LCAM Antibody, Uvomorulin Antibody
<b>Family / Subfamily:</b>	Cadherin / not assigned-Cadherin
<b>Host</b>	CDH1 antibody was produced in Mouse
<b>Clonality:</b>	Monoclonal
<b>Isotype:</b>	IgG1
<b>Clone Name:</b>	7A2
<b>Immunogen Species:</b>	CDH1 / E Cadherin antibody was raised against Human
<b>Antigen Type:</b>	Recombinant protein
<b>Immunogen:</b>	CDH1 / E Cadherin antibody was raised against purified recombinant fragment of human CDH1 expressed in E. coli.
<b>Specificity:</b>	Human E Cadherin
<b>Reactivity:</b>	Human, Monkey, Mouse
<b>Purification:</b>	Ascites
<b>Presentation:</b>	Ascites, 0.03% sodium azide
<b>Recommended Storage:</b>	Long term: -20°C; Short term: +4°C; Avoid freeze-thaw cycles.
<b>Uses:</b>	Western blot (1:500 - 1:2000), ELISA (1:10000) (Optimal dilution to be determined by the researcher)
<b>Size:</b>	100 µl

**Western Blot Image:**



Western blot of CDH1 mouse mAb against LNCAP (1)A431 (2), DU145 (3), PC-3 (4), PC-12 (5) and T47D(6) cell lysate.

**Requested From:**

Japan

Laboratory Reagent For In Vitro Research Use Only

Not for resale without prior written consent from LifeSpan BioSciences, Inc.

Created on 9/26/2014

© 2014 LifeSpan BioSciences