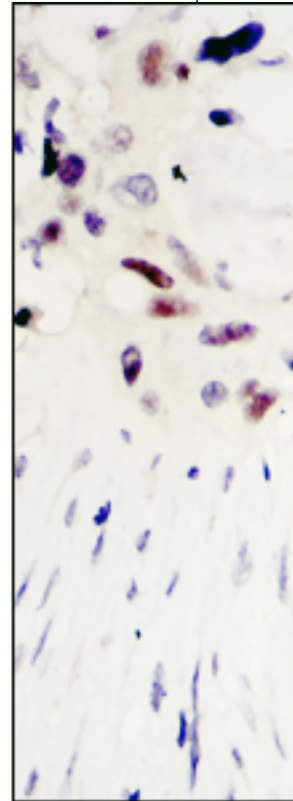
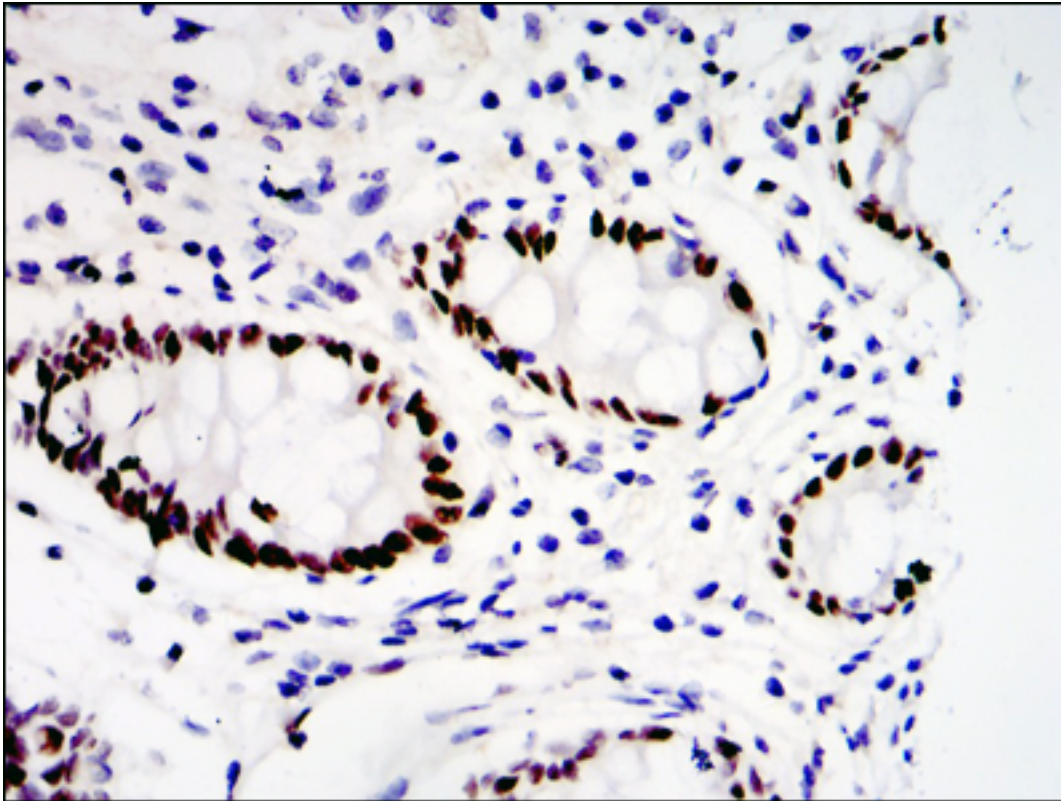


KLF4 Mouse anti-Human Monoclonal (1E6) Antibody - LS-C169255 - LSBio

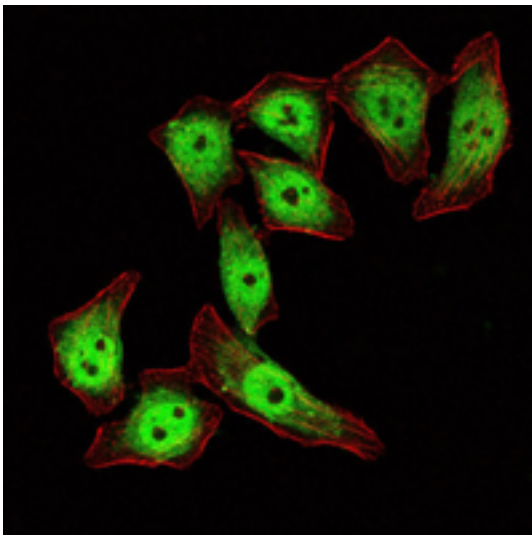
CatalogID:	LS-C169255
Target:	Kruppel-like factor 4 (gut) (KLF4)
Synonyms:	KLF4 Antibody, EZF Antibody, GKLF Antibody, Kruppel-like factor 4 (gut) Antibody, Hezf Antibody, Krueppel-like factor 4 Antibody
Host	KLF4 antibody was produced in Mouse
Clonality:	Monoclonal
Isotype:	IgG1
Clone Name:	1E6
Immunogen Species:	KLF4 antibody was raised against Human
Antigen Type:	Recombinant protein
Immunogen:	KLF4 antibody was raised against purified recombinant fragment of human KLF4 expressed in E. coli.
Specificity:	Human KLF4
Reactivity:	Human
Purification:	Ascites
Presentation:	Ascites, 0.03% sodium azide
Recommended Storage:	Long term: -20°C; Short term: +4°C; Avoid freeze-thaw cycles.
Uses:	IHC (1:200 - 1:1000), ICC (1:200 - 1:1000), Immunofluorescence (1:1000), Western blot (1:500 - 1:2000), ELISA (1:10000) (Optimal dilution to be determined by the researcher)
Size:	100 µl

Immunohistochemistry Image:



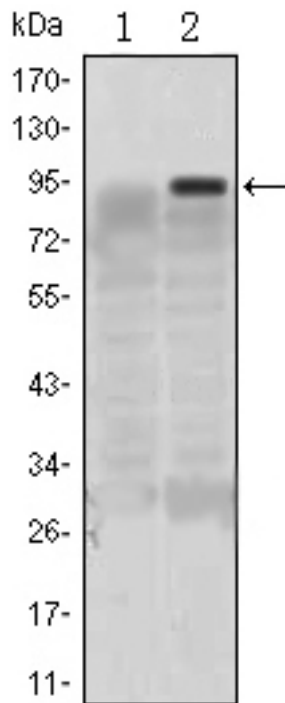
IHC of paraffin-embedded colon cancer tissues (left) and lung cancer tissues (right) using KLF4 mouse mAb with DAB staining

Immunofluorescence Image:



Immunofluorescence of ECA109 cells using KLF4 mouse mAb (green). Red: Actin filaments have been labeled with Alexa Fluor-555 phalloidin.

Western Blot Image:



Western blot of KLF4 mAb against HEK293 (1) and KLF4(AA: 2-180)-hlgGFc transfected HEK293 (2) cell lysate.

Requested From:

Japan

Laboratory Reagent For In Vitro Research Use Only

Not for resale without prior written consent from LifeSpan BioSciences, Inc.

Created on 9/26/2014

© 2014 LifeSpan BioSciences