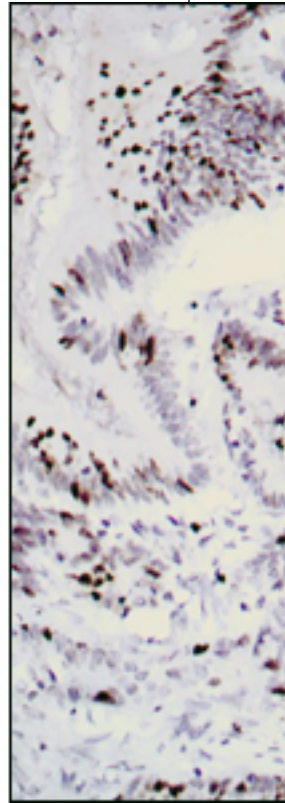
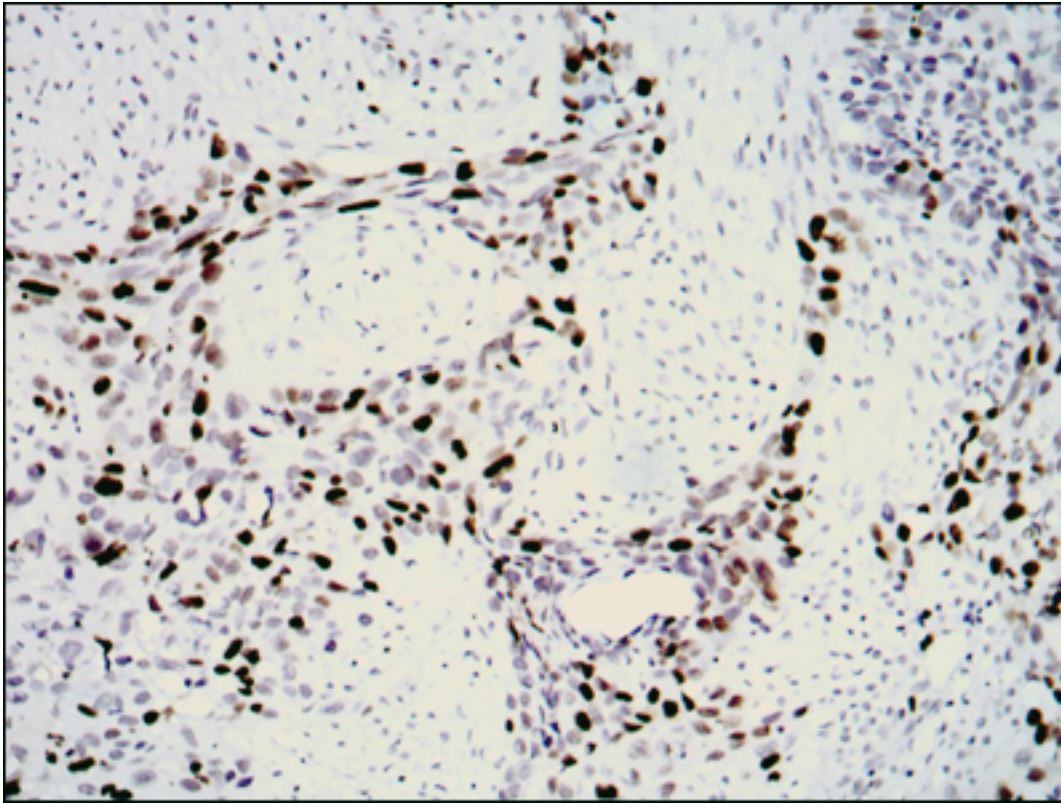


**MKI67 / Ki67 Mouse anti-Human Monoclonal (8D5) Antibody - LS-C169250 - LSBio**

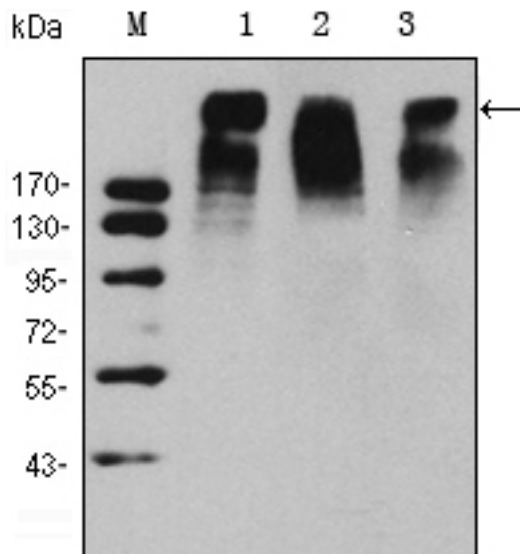
<b>CatalogID:</b>	LS-C169250
<b>Target:</b>	marker of proliferation Ki-67 (MKI67)
<b>Synonyms:</b>	MKI67 Antibody, Antigen KI-67 Antibody, Ki67 Antibody, KIA Antibody
<b>Host</b>	MKI67 antibody was produced in Mouse
<b>Clonality:</b>	Monoclonal
<b>Isotype:</b>	IgG1
<b>Clone Name:</b>	8D5
<b>Immunogen Species:</b>	MKI67 / Ki67 antibody was raised against Human
<b>Antigen Type:</b>	Synthetic peptide - KLH conjugated
<b>Immunogen:</b>	MKI67 / Ki67 antibody was raised against synthetic peptide corresponding to aa (CEDLAGFKELFQTPG) of human KI67, conjugated to KLH.
<b>Specificity:</b>	Human Ki67
<b>Reactivity:</b>	Human
<b>Purification:</b>	Ascites
<b>Presentation:</b>	Ascites, 0.03% sodium azide
<b>Recommended Storage:</b>	Long term: -20°C; Short term: +4°C; Avoid freeze-thaw cycles.
<b>Uses:</b>	IHC (1:200 - 1:1000), Western blot (1:500 - 1:2000), ELISA (1:10000) (Optimal dilution to be determined by the researcher)
<b>Size:</b>	100 µl

**Immunohistochemistry Image:**



IHC of paraffin-embedded lung cancer (left) and rectal cancer (right) using KI67 mouse mAb with DAB staining.

**Western Blot Image:**



Western blot of KI67 mouse mAb against HeLa (1), MCF-7 (2) and Raji (3) cell lysate.

**Requested From:**

Japan

Laboratory Reagent For In Vitro Research Use Only

Not for resale without prior written consent from LifeSpan BioSciences, Inc.

Created on 9/26/2014

© 2014 LifeSpan BioSciences