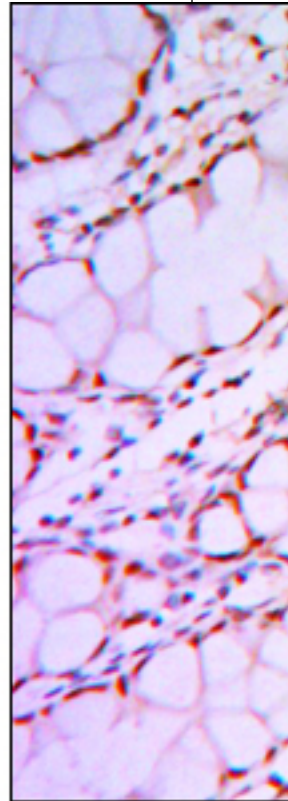
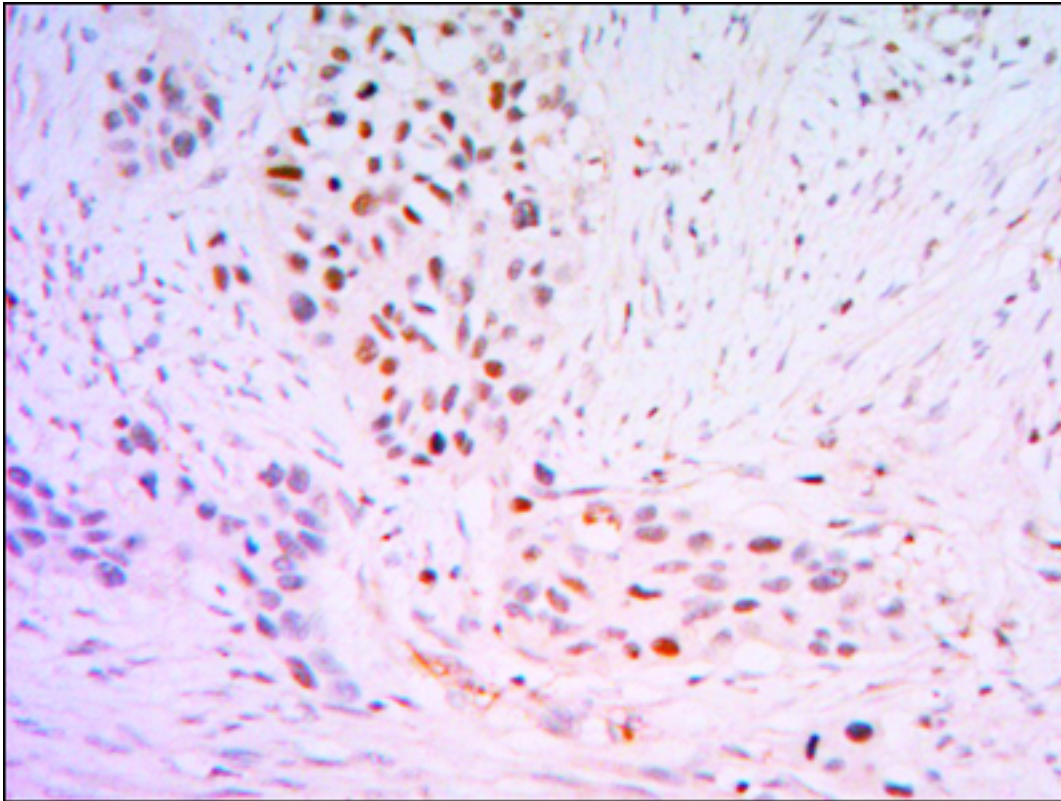


KLF4 Mouse anti-Human Monoclonal (1E5) Antibody - LS-C169232 - LSBio

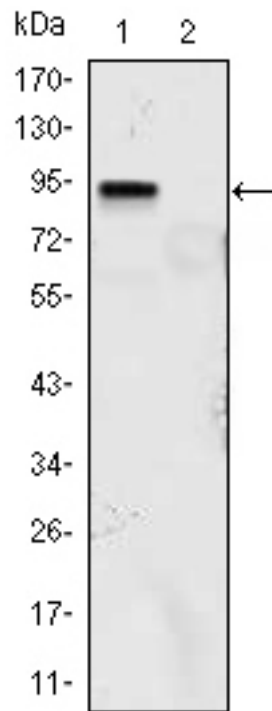
CatalogID:	LS-C169232
Target:	Kruppel-like factor 4 (gut) (KLF4)
Synonyms:	KLF4 Antibody, EZF Antibody, GKLF Antibody, Kruppel-like factor 4 (gut) Antibody, Hezf Antibody, Krueppel-like factor 4 Antibody
Host	KLF4 antibody was produced in Mouse
Clonality:	Monoclonal
Isotype:	IgG1
Clone Name:	1E5
Immunogen Species:	KLF4 antibody was raised against Human
Antigen Type:	Recombinant protein
Immunogen:	KLF4 antibody was raised against purified recombinant fragment of human KLF4 (aa2-470) expressed in E. coli.
Specificity:	Human KLF4
Reactivity:	Human
Purification:	Ascites
Presentation:	Ascites, 0.03% sodium azide
Recommended Storage:	Long term: -20°C; Short term: +4°C; Avoid freeze-thaw cycles.
Uses:	IHC (1:200 - 1:1000), Western blot (1:500 - 1:2000), ELISA (1:10000) (Optimal dilution to be determined by the researcher)
Size:	100 µl

Immunohistochemistry Image:



IHC of paraffin-embedded lung cancer tissues (left) and human rectum tissues (right) using KLF4 mouse mAb with DAB staining.

Western Blot Image:



Western blot of KLF4 mouse mAb against KLF4 (aa2-470)-hlgGfc transfected HEK293 (1) and HEK293 (2) cell lysate.

Requested From:

Japan

Laboratory Reagent For In Vitro Research Use Only

Not for resale without prior written consent from LifeSpan BioSciences, Inc.

Created on 9/26/2014

© 2014 LifeSpan BioSciences