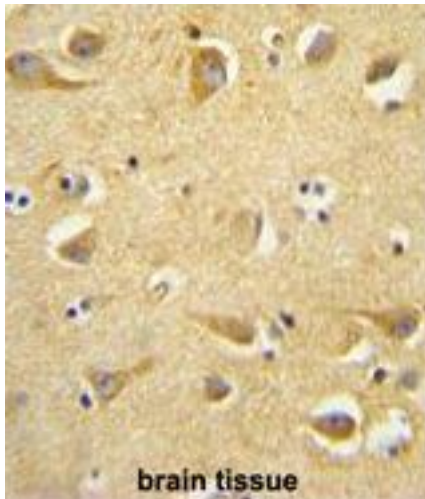


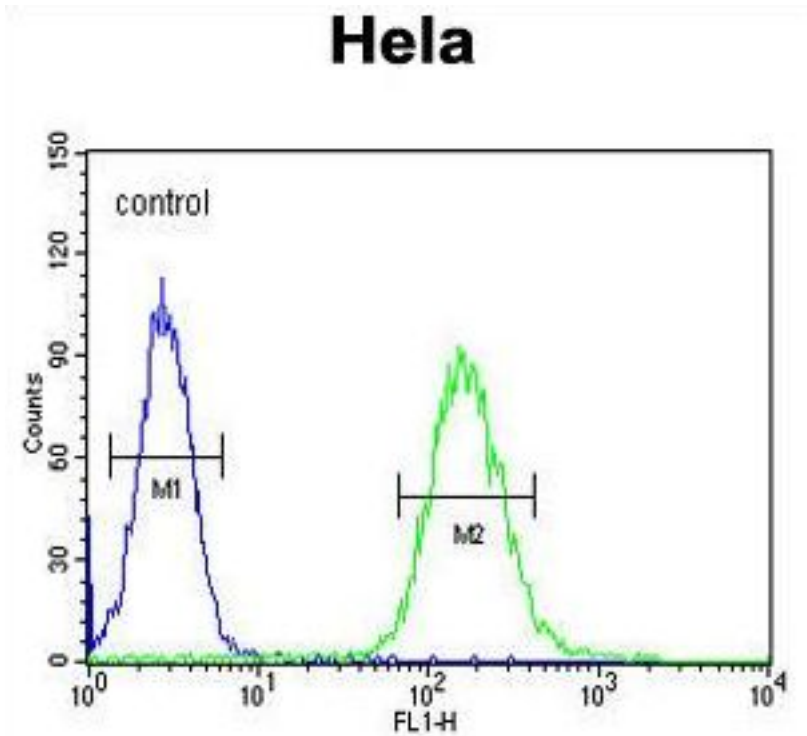
CLTC / Clathrin Heavy Chain Rabbit anti-Human Polyclonal (aa1024-1054) Antibody - LS-C168861 - LSBio	
CatalogID:	LS-C168861
Target:	clathrin, heavy chain (Hc) (CLTC)
Synonyms:	CLTC Antibody, Clathrin, heavy chain Antibody, CLH17 Antibody, CLTCL2 Antibody, CHC Antibody, CHC17 Antibody, Clathrin heavy chain 1 Antibody, CLH-17 Antibody, KIAA0034 Antibody, Hc Antibody, Clathrin Heavy Chain Antibody, Clathrin, heavy chain (Hc) Antibody
Host	CLTC antibody was produced in Rabbit
Clonality:	Polyclonal
Immunogen Species:	CLTC / Clathrin Heavy Chain antibody was raised against Human
Antigen Type:	Synthetic peptide
Immunogen:	CLTC / Clathrin Heavy Chain antibody was raised against kLH-conjugated synthetic peptide from internal region of human CLTC.
Specificity:	Human CLTC / Clathrin Heavy Chain
Epitope:	aa1024-1054
Reactivity:	Human
Purification:	Immunoaffinity purified
Presentation:	PBS, 0.09% sodium azide
Recommended Storage:	Maintain refrigerated at 2-8°C for up to 6 months. For long term storage store at -20°C.
Uses:	IHC - Paraffin (1:50 - 1:100), Western blot (1:1000), Flow Cytometry (1:10 - 1:50) (Optimal dilution to be determined by the researcher)
Size:	400 µl

Immunohistochemistry Image:



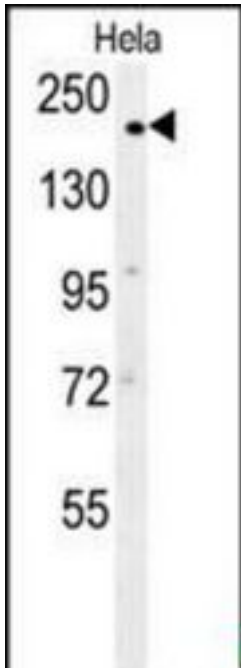
CLTC antibody (Center) IHC of formalin fixed and paraffin embedded human brain tissue followed by peroxidase conjugation of the secondary antibody and DAB staining. This demonstrates the use of the CLTC antibody (Center) for immunohistochemistry.

Flow Cytometry Image:



CLTC Antibody (Center) flow cytometry of HeLa cells (right histogram) compared to a negative control cell (left histogram). FITC-conjugated goat-anti-rabbit secondary antibodies were used for the analysis.

Western Blot Image:



CLTC Antibody (Center) Western blot of HeLa cell line lysates (35 ug/lane). This demonstrates the CLTC antibody detected the CLTC protein (arrow).

Requested From:

Japan

Laboratory Reagent For In Vitro Research Use Only

Not for resale without prior written consent from LifeSpan BioSciences, Inc.

Created on 9/26/2014

© 2014 LifeSpan BioSciences