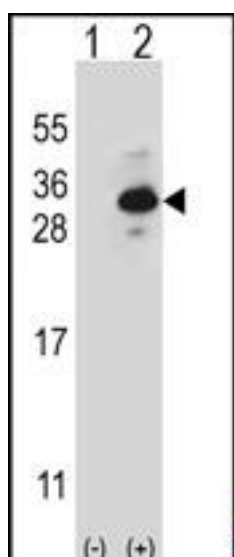


CLTB Rabbit anti-Human Polyclonal Antibody - LS-C168859 - LSBio

CatalogID:	LS-C168859
Target:	clathrin, light chain B (CLTB)
Synonyms:	CLTB Antibody, Clathrin, light chain B Antibody, Clathrin light chain B Antibody, LCB Antibody, Clathrin, light chain (Lcb) Antibody
Host	CLTB antibody was produced in Rabbit
Clonality:	Polyclonal
Immunogen Species:	CLTB antibody was raised against Human
Antigen Type:	Recombinant protein
Immunogen:	CLTB antibody was raised against recombinant protein from human CLTB.
Specificity:	Human CLTB
Reactivity:	Human
Purification:	Immunoaffinity purified
Presentation:	PBS, 0.09% sodium azide
Recommended Storage:	Maintain refrigerated at 2-8°C for up to 6 months. For long term storage store at -20°C.
Uses:	Western blot (1:1000) (Optimal dilution to be determined by the researcher)
Size:	400 µl

Western Blot Image:



Western blot of CLTB (arrow) using rabbit polyclonal CLTB Antibody. 293 cell lysates (2 ug/lane) either nontransfected (Lane 1) or transiently transfected (Lane 2) with the CLTB gene.

Requested From:	Japan
Laboratory Reagent For In Vitro Research Use Only	
Not for resale without prior written consent from LifeSpan BioSciences, Inc.	
Created on 9/26/2014	
© 2014 LifeSpan BioSciences	