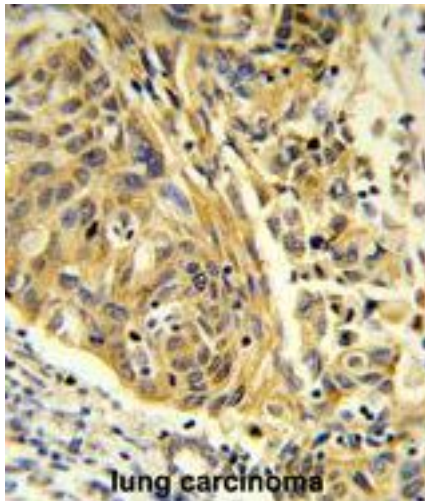


CLTA / LCA Rabbit anti-Human Polyclonal Antibody - LS-C168858 - LSBio

CatalogID:	LS-C168858
Target:	clathrin, light chain A (CLTA)
Synonyms:	CLTA Antibody, Clathrin light chain A Antibody, Clathrin, light chain A Antibody, LCA Antibody
Host	CLTA antibody was produced in Rabbit
Clonality:	Polyclonal
Immunogen Species:	CLTA / LCA antibody was raised against Human
Antigen Type:	Synthetic peptide
Immunogen:	CLTA / LCA antibody was raised against kLH-conjugated synthetic peptide selected from internal region of human CLTA.
Specificity:	Human CLTA / LCA
Reactivity:	Human
Purification:	Immunoaffinity purified
Presentation:	PBS, 0.09% sodium azide
Recommended Storage:	Maintain refrigerated at 2-8°C for up to 6 months. For long term storage store at -20°C.
Uses:	IHC - Paraffin (1:50 - 1:100), Western blot (1:1000), Flow Cytometry (1:10 - 1:50) (Optimal dilution to be determined by the researcher)
Size:	400 µl

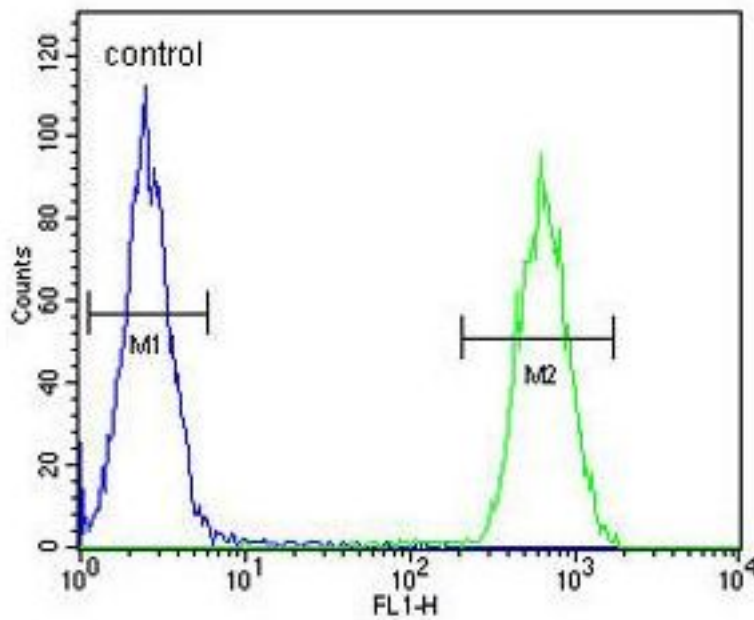
Immunohistochemistry Image:



Formalin-fixed and paraffin-embedded human lung carcinoma reacted with CLTA Antibody (Center), which was peroxidase-conjugated to the secondary antibody, followed by DAB staining.

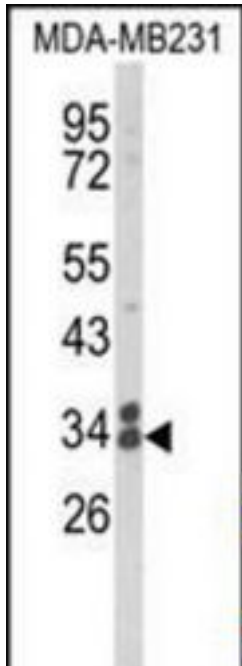
Flow Cytometry Image:

MDA-MB231



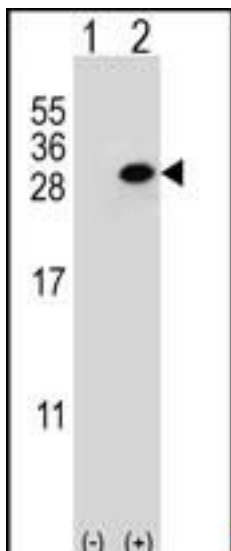
CLTA Antibody (Center) flow cytometry of MDA-MB231 cells (right histogram) compared to a negative control cell (left histogram). FITC-conjugated goat-anti-rabbit secondary antibodies were used for the analysis.

Western Blot Image:



Western blot of CLTA Antibody (Center) in MDA-MB231 cell line lysates (35 ug/lane). CLTA (arrow) was detected using the purified Pab.

Western Blot Image:



Western blot of CLTA (arrow) using rabbit polyclonal CLTA Antibody (Center). 293 cell lysates (2 ug/lane) either nontransfected (Lane 1) or transiently transfected (Lane 2) with the CLTA gene.

Requested From:

Japan

Laboratory Reagent For In Vitro Research Use Only

Not for resale without prior written consent from LifeSpan BioSciences, Inc.

Created on 9/26/2014

© 2014 LifeSpan BioSciences