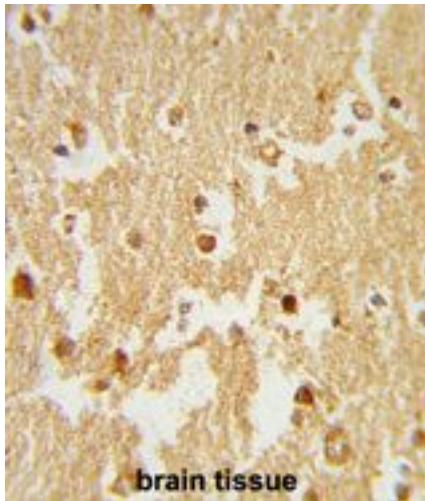


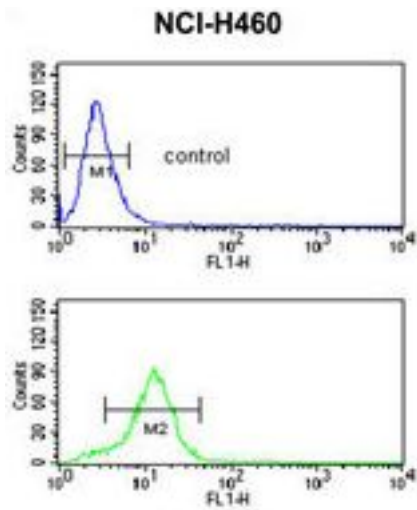
ESRRB / ERR Beta Rabbit anti-Human Polyclonal (aa283-312) Antibody - LS-C167834 - LSBio	
CatalogID:	LS-C167834
Target:	estrogen-related receptor beta (ESRRB)
Synonyms:	ESRRB Antibody, DFNB35 Antibody, ERRb Antibody, ERRbeta-2 Antibody, ESRL2 Antibody, Estrogen receptor-like 2 Antibody, ERR-beta Antibody, ERB2 Antibody, ERRbeta Antibody, NR3B2 Antibody, Nuclear receptor ERB2 Antibody, Orphan nuclear receptor Antibody, ERR beta-2 Antibody, ERR2 Antibody, Estrogen-related receptor 2 Antibody, Estrogen-related receptor beta Antibody, Steroid hormone receptor ERR2 Antibody
Family / Subfamily:	NHR / NR3 Steroid receptor
Host	ESRRB antibody was produced in Rabbit
Clonality:	Polyclonal
Immunogen Species:	ESRRB / ERR Beta antibody was raised against Human
Antigen Type:	Synthetic peptide
Immunogen:	ESRRB / ERR Beta antibody was raised against kLH-conjugated synthetic peptide from internal region of human ESRRB.
Specificity:	Human ESRRB / ERR-Beta
Epitope:	aa283-312
Reactivity:	Human
Purification:	Ammonium sulfate precipitation
Presentation:	PBS, 0.09% sodium azide
Recommended Storage:	Maintain refrigerated at 2-8°C for up to 6 months. For long term storage store at -20°C.
Uses:	IHC - Paraffin (1:50 - 1:100), Western blot (1:1000), Flow Cytometry (1:10 - 1:50) (Optimal dilution to be determined by the researcher)
Size:	400 µl

Immunohistochemistry Image:



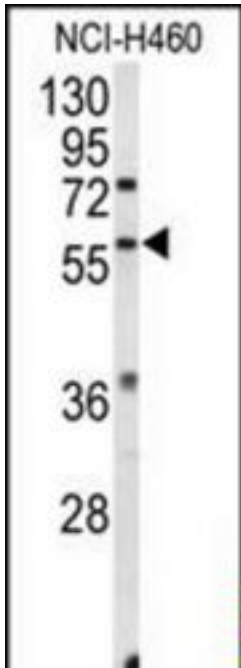
Formalin-fixed and paraffin-embedded human brain tissue reacted with ESRRB Antibody (Center), which was peroxidase-conjugated to the secondary antibody, followed by DAB staining.

Flow Cytometry Image:



ESRRB Antibody (Center) flow cytometry of NCI-H460 cells (bottom histogram) compared to a negative control cell (top histogram). FITC-conjugated goat-anti-rabbit secondary antibodies were used for the analysis.

Western Blot Image:



Western blot of ESRRB Antibody (Center) in NCI-H460 cell line lysates (35 ug/lane). ESRRB (arrow) was detected using the purified Pab.

Requested From:

Japan

Laboratory Reagent For In Vitro Research Use Only

Not for resale without prior written consent from LifeSpan BioSciences, Inc.

Created on 9/26/2014

© 2014 LifeSpan BioSciences