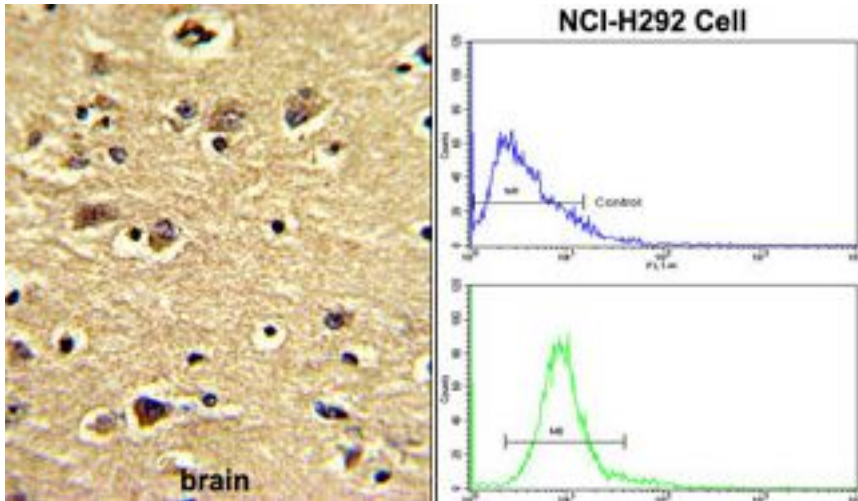


CLINT1 Rabbit anti-Human Polyclonal (aa228-258) Antibody - LS-C167770 - LSBio

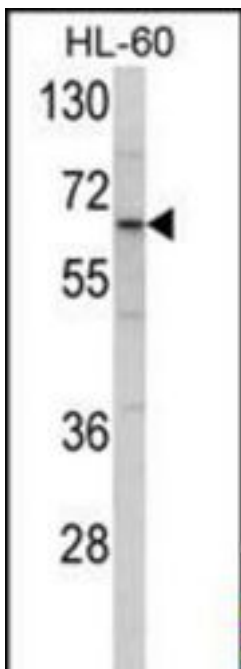
CatalogID:	LS-C167770
Target:	clathrin interactor 1 (CLINT1)
Synonyms:	CLINT1 Antibody, CLINT Antibody, Enthoprotin Antibody, Epsin-4 Antibody, Epsin-related protein Antibody, EPNR Antibody, EpsinR Antibody, EPN4 Antibody, KIAA0171 Antibody, Clathrin interactor 1 Antibody, ENTH Antibody, Epsin 4 Antibody
Host	CLINT1 antibody was produced in Rabbit
Clonality:	Polyclonal
Immunogen Species:	CLINT1 antibody was raised against Human
Antigen Type:	Synthetic peptide
Immunogen:	CLINT1 antibody was raised against kLH-conjugated synthetic peptide from internal region of human ENTH.
Specificity:	Human CLINT1
Epitope:	aa228-258
Reactivity:	Human
Purification:	Ammonium sulfate precipitation
Presentation:	PBS, 0.09% sodium azide
Recommended Storage:	Maintain refrigerated at 2-8°C for up to 6 months. For long term storage store at -20°C.
Uses:	IHC - Paraffin (1:50 - 1:100), Western blot (1:1000), Flow Cytometry (1:10 - 1:50) (Optimal dilution to be determined by the researcher)
Size:	400 µl

Immunohistochemistry Image:



(LEFT) Formalin-fixed and paraffin-embedded human brain with ENTH Antibody (Center), which was peroxidase-conjugated to the secondary antibody, followed by DAB staining. This data demonstrates the use of this antibody for immunohistochemistry; clinical relevance has not been evaluated. (RIGHT) Flow cytometric analysis of NCI-H292 cells using ENTH Antibody (Center) (bottom histogram) compared to a negative control cell (top histogram). FITC-conjugated goat-anti-rabbit secondary antibodies were used for the analysis.

Western Blot Image:



Western blot of ENTH Antibody (Center) in HL-60 cell line lysates (35 ug/lane). ENTH (arrow) was detected using the purified Pab.

Requested From:

Japan

Laboratory Reagent For In Vitro Research Use Only

Not for resale without prior written consent from LifeSpan BioSciences, Inc.

Created on 9/26/2014

© 2014 LifeSpan BioSciences