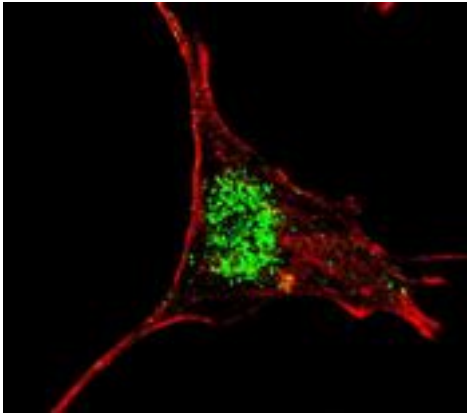


## KLF4 Rabbit anti-Human Polyclonal (aa357-386) Antibody - LS-C165557 - LSBio

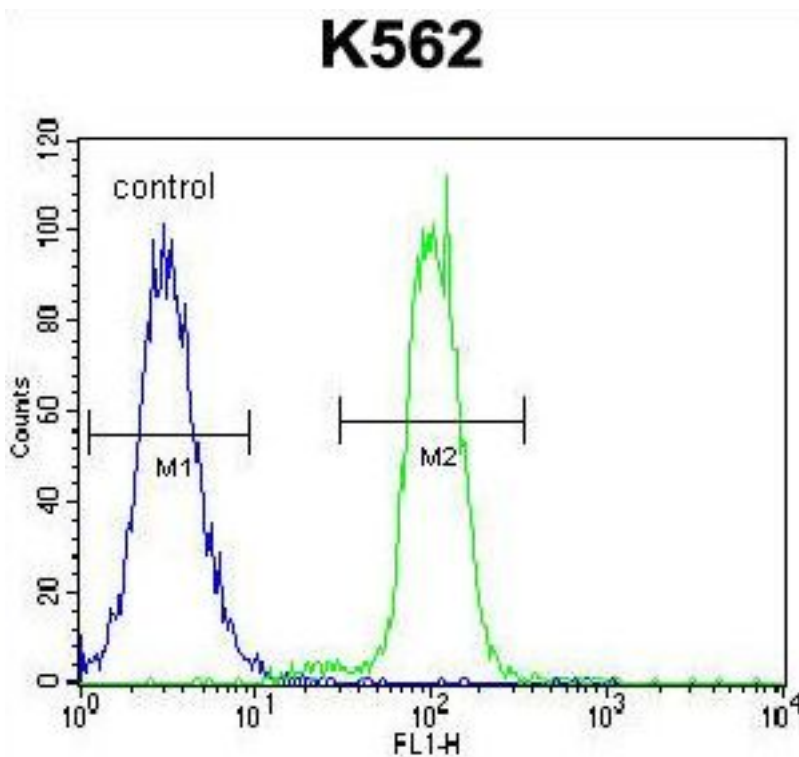
<b>CatalogID:</b>	LS-C165557
<b>Target:</b>	Kruppel-like factor 4 (gut) (KLF4)
<b>Synonyms:</b>	KLF4 Antibody, EZF Antibody, GKLF Antibody, Kruppel-like factor 4 (gut) Antibody, Hezf Antibody, Krueppel-like factor 4 Antibody
<b>Host</b>	KLF4 antibody was produced in Rabbit
<b>Clonality:</b>	Polyclonal
<b>Immunogen Species:</b>	KLF4 antibody was raised against Human
<b>Antigen Type:</b>	Synthetic peptide
<b>Immunogen:</b>	KLF4 antibody was raised against kLH-conjugated synthetic peptide from C-terminal region of human KLF4.
<b>Specificity:</b>	Human KLF4
<b>Epitope:</b>	aa357-386
<b>Reactivity:</b>	Human
<b>Purification:</b>	Ammonium sulfate precipitation
<b>Presentation:</b>	PBS, 0.09% sodium azide
<b>Recommended Storage:</b>	Maintain refrigerated at 2-8°C for up to 6 months. For long term storage store at -20°C.
<b>Uses:</b>	ICC, Immunofluorescence (1:10 - 1:50), Western blot (1:1000), Flow Cytometry (1:10 - 1:50) (Optimal dilution to be determined by the researcher)
<b>Size:</b>	400 µl

#### Immunofluorescence Image:



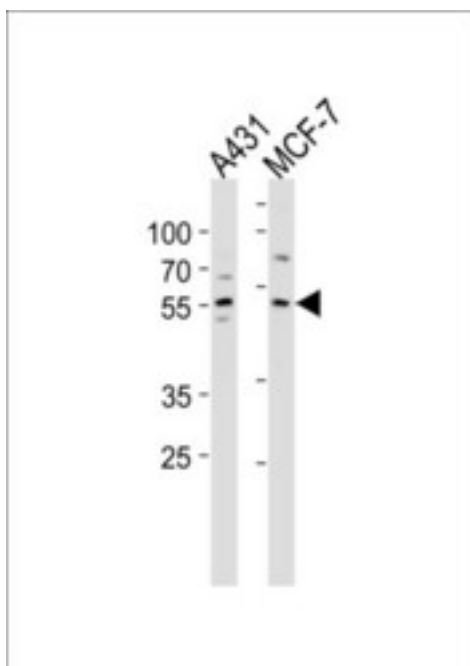
Fluorescent confocal image of SY5Y cells stained with KLF4 (C-term) antibody. SY5Y cells were fixed with 4% PFA (20 min), permeabilized with Triton X-100 (0.2%, 30 min), then incubated with KLF4 (C-term) primary antibody (1:200, 2 h at room temperature). For secondary antibody, Alexa Fluor 488 conjugated donkey anti-rabbit antibody (green) was used (1:1000, 1h). Cytoplasmic actin was counterstained with Alexa Fluor 555 (red) conjugated Phalloidin (5.25 M, 25 min). KLF4 immunoreactivity is localized very specifically to the nuclei of the SY5Y cells.

#### Flow Cytometry Image:



KLF4 Antibody (C-term) flow cytometry of K562 cells (right histogram) compared to a negative control cell (left histogram). FITC-conjugated goat-anti-rabbit secondary antibodies were used for the analysis.

**Western Blot Image:**



KLF4 Antibody (C-term) Western blot of K562 cell line lysates (35 ug/lane). This demonstrates the KLF4 antibody detected the KLF4 protein (arrow).

**Requested From:**

Japan

Laboratory Reagent For In Vitro Research Use Only

Not for resale without prior written consent from LifeSpan BioSciences, Inc.

Created on 9/26/2014

© 2014 LifeSpan BioSciences