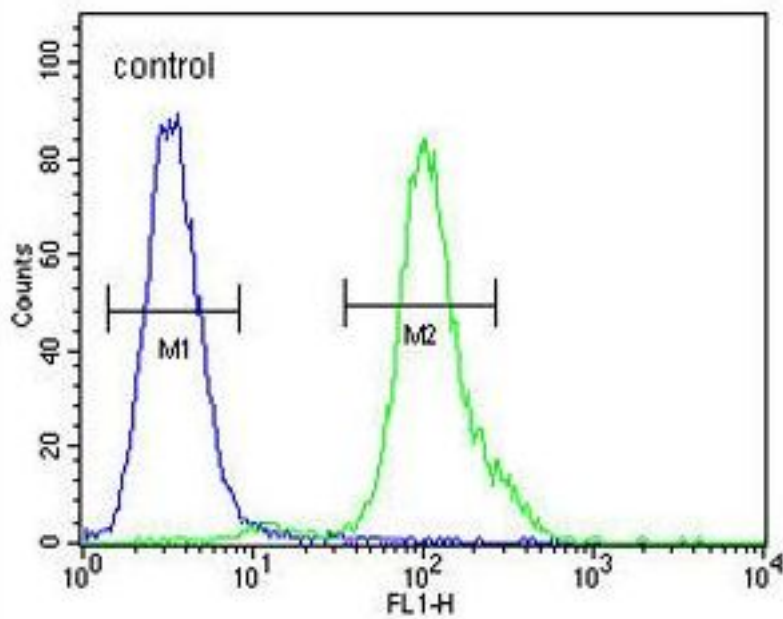


MYCT1 Rabbit anti-Human Polyclonal (aa142-171) Antibody - LS-C164700 - LSBio

CatalogID:	LS-C164700
Target:	Myc Target 1 (MYCT1)
Synonyms:	MYCT1 Antibody, MTMC1 Antibody, Myc target protein 1 Antibody, Myc target 1 Antibody, Myc target in myeloid cells 1 Antibody, MTLA Antibody
Host	MYCT1 antibody was produced in Rabbit
Clonality:	Polyclonal
Immunogen Species:	MYCT1 antibody was raised against Human
Antigen Type:	Synthetic peptide
Immunogen:	MYCT1 antibody was raised against kLH-conjugated synthetic peptide from C-terminal region of human MYCT1.
Specificity:	Human MYCT1
Epitope:	aa142-171
Reactivity:	Human
Purification:	Immunoaffinity purified
Presentation:	PBS, 0.09% sodium azide
Recommended Storage:	Maintain refrigerated at 2-8°C for up to 6 months. For long term storage store at -20°C.
Uses:	Western blot (1:1000), Flow Cytometry (1:10 - 1:50) (Optimal dilution to be determined by the researcher)
Size:	400 µl

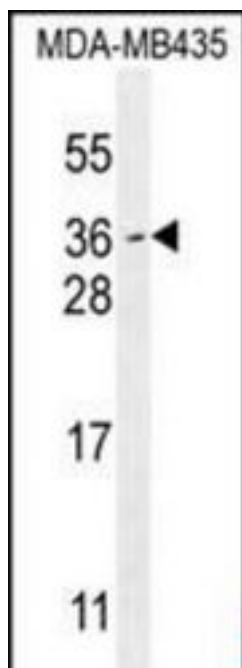
Flow Cytometry Image:

MDA-MB435



MYCT1 Antibody (C-term) flow cytometry of MDA-MB435 cells (right histogram) compared to a negative control cell (left histogram). FITC-conjugated goat-anti-rabbit secondary antibodies were used for the analysis.

Western Blot Image:



MYCT1 Antibody (C-term) Western blot of MDA-MB435 cell line lysates (35 ug/lane). This demonstrates the MYCT1 antibody detected the MYCT1 protein (arrow).

Requested From:	Japan
Laboratory Reagent For In Vitro Research Use Only	
Not for resale without prior written consent from LifeSpan BioSciences, Inc.	
Created on 9/26/2014	
© 2014 LifeSpan BioSciences	