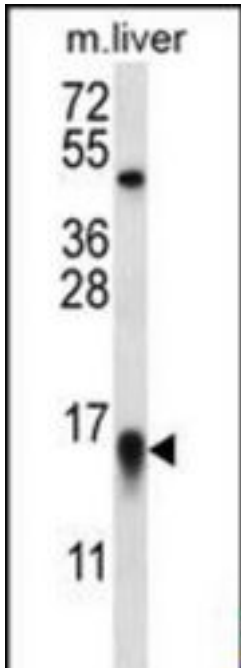


MYCBP Rabbit anti-Human Polyclonal (aa1-30) Antibody - LS-C164698 - LSBio	
CatalogID:	LS-C164698
Target:	MYC binding protein (MYCBP)
Synonyms:	MYCBP Antibody, AMY-1 Antibody, Associate of Myc 1 Antibody, C-Myc-binding protein Antibody, Associate of myc-1 Antibody, C-myc binding protein Antibody, AMY1 Antibody
Host	MYCBP antibody was produced in Rabbit
Clonality:	Polyclonal
Immunogen Species:	MYCBP antibody was raised against Human
Antigen Type:	Synthetic peptide
Immunogen:	MYCBP antibody was raised against kLH-conjugated synthetic peptide from N-terminal region of human MYCBP.
Specificity:	Human MYCBP
Epitope:	aa1-30
Reactivity:	Human, Mouse
Purification:	Immunoaffinity purified
Presentation:	PBS, 0.09% sodium azide
Recommended Storage:	Maintain refrigerated at 2-8°C for up to 6 months. For long term storage store at -20°C.
Uses:	Western blot (1:1000) (Optimal dilution to be determined by the researcher)
Size:	400 µl

Western Blot Image:



MYCBP Antibody (N-term) Western blot of mouse liver tissue lysates (35 ug/lane). This demonstrates the MYCBP antibody detected the MYCBP protein (arrow).

Requested From:

Japan

Laboratory Reagent For In Vitro Research Use Only

Not for resale without prior written consent from LifeSpan BioSciences, Inc.

Created on 9/26/2014

© 2014 LifeSpan BioSciences