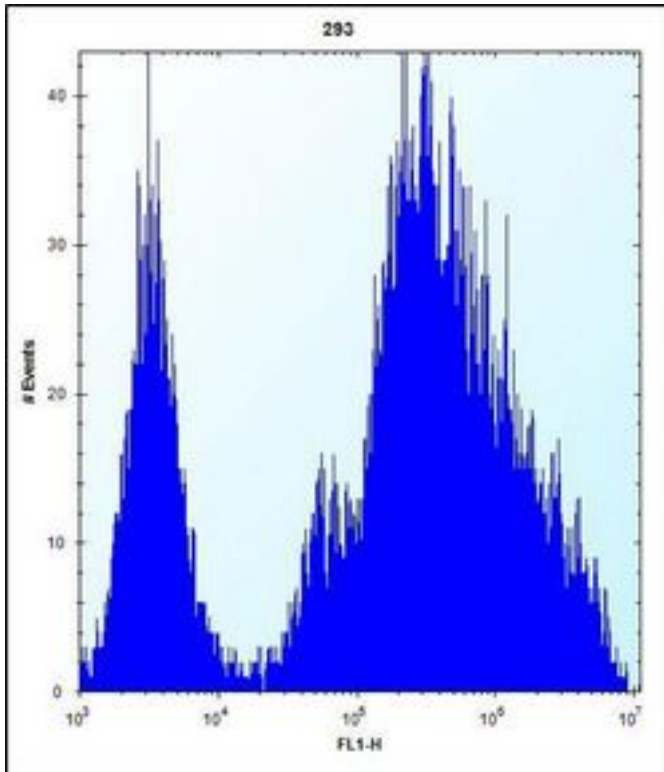


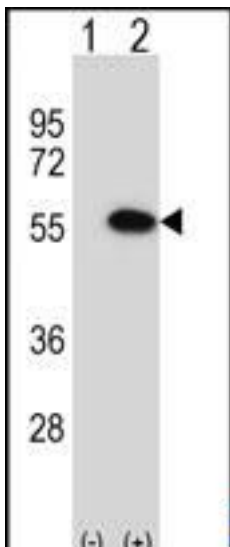
MINA / MINA53 Rabbit anti-Human Polyclonal (aa1-30) Antibody - LS-C164198 - LSBio	
CatalogID:	LS-C164198
Target:	MYC induced nuclear antigen (MINA)
Synonyms:	MINA Antibody, MYC-induced nuclear antigen Antibody, NO52 Antibody, MINA53 Antibody, MYC induced nuclear antigen Antibody, MDIG Antibody, Nucleolar protein 52 Antibody
Host	MINA antibody was produced in Rabbit
Clonality:	Polyclonal
Immunogen Species:	MINA / MINA53 antibody was raised against Human
Antigen Type:	Synthetic peptide
Immunogen:	MINA / MINA53 antibody was raised against kLH-conjugated synthetic peptide from N-terminal region of human MINA.
Specificity:	Human MINA / MINA53
Epitope:	aa1-30
Reactivity:	Human
Purification:	Ammonium sulfate precipitation
Presentation:	PBS, 0.09% sodium azide
Recommended Storage:	Maintain refrigerated at 2-8°C for up to 6 months. For long term storage store at -20°C.
Uses:	Western blot (1:1000), Flow Cytometry (1:10 - 1:50) (Optimal dilution to be determined by the researcher)
Size:	400 µl

Flow Cytometry Image:



MINA Antibody (N-term) flow cytometry of 293 cells (right histogram) compared to a negative control cell (left histogram). FITC-conjugated goat-anti-rabbit secondary antibodies were used for the analysis.

Western Blot Image:



Western blot of MINA (arrow) using rabbit polyclonal MINA Antibody (N-term). 293 cell lysates (2 ug/lane) either nontransfected (Lane 1) or transiently transfected (Lane 2) with the MINA gene.

Requested From:

Japan

Laboratory Reagent For In Vitro Research Use Only

Not for resale without prior written consent from LifeSpan BioSciences, Inc.

Created on 9/26/2014

© 2014 LifeSpan BioSciences