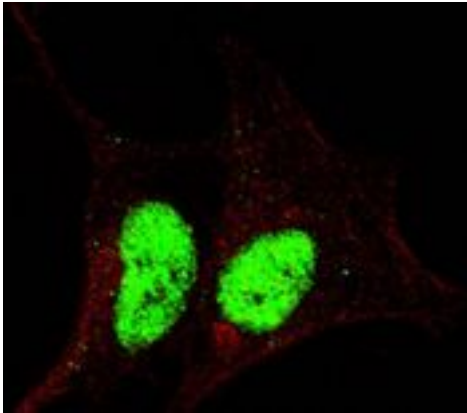


SOX2 Rabbit anti-Human Polyclonal (pS246) Antibody - LS-C163676 - LSBio

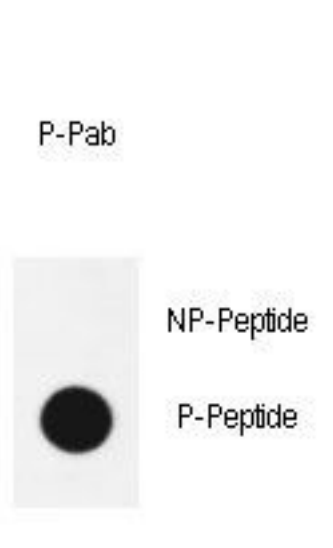
CatalogID:	LS-C163676
Target:	SRY (sex determining region Y)-box 2 (SOX2)
Synonyms:	SOX2 Antibody, MCOPS3 Antibody, Transcription factor SOX2 Antibody, ANOP3 Antibody, Transcription factor SOX-2 Antibody, SRY-related HMG-box gene 2 Antibody
Family / Subfamily:	Transcription factor
Host	SOX2 antibody was produced in Rabbit
Clonality:	Polyclonal
Immunogen Species:	SOX2 antibody was raised against Human
Antigen Type:	Synthetic phospho-peptide
Immunogen:	SOX2 antibody was raised against kLH-conjugated synthetic phosphopeptide surrounding S246 of human Sox2.
Specificity:	Human SOX2
Epitope:	pS246
Reactivity:	Human
Purification:	Immunoaffinity purified
Presentation:	PBS, 0.09% sodium azide
Recommended Storage:	Maintain refrigerated at 2-8°C for up to 6 months. For long term storage store at -20°C.
Uses:	ICC, Immunofluorescence (1:200), Dot Blot (1:500) (Optimal dilution to be determined by the researcher)
Size:	400 µl

Immunofluorescence Image:



Fluorescent confocal image of an SY5Y cell stained with phospho SOX2-pS246 antibody. SY5Y cells were fixed with 4% PFA (20 min), permeabilized with Triton X-100 (0.2%, 30 min), then incubated with SOX2-pS246 primary antibody (1:200, 2 h at room temperature). For secondary antibody, Alexa Fluor 488 conjugated donkey anti-mouse antibody (green) was used (1:1000, 1h). Cytoplasmic actin was counterstained with Alexa Fluor 555 (red) conjugated Phalloidin (5.25 M, 25 min). Nuclei were counterstained with Hoechst 33342 (blue) (10 g/ml, 3 min). SOX2 immunoreactivity is localized exclusively to the nucleus.

Dot Blot Image:



Dot blot analysis of anti-phospho-Sox2-pS246 Phospho-specific Pab on nitrocellulose membrane. 50ng of Phospho-peptide or Non Phospho-peptide per dot were adsorbed. Antibody working concentrations are 0.6 ug per ml.

Requested From:

Japan

Laboratory Reagent For In Vitro Research Use Only

Not for resale without prior written consent from LifeSpan BioSciences, Inc.

Created on 9/26/2014

© 2014 LifeSpan BioSciences