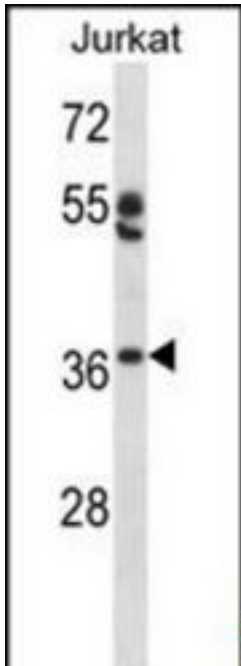


OVOL1 Rabbit anti-Human Polyclonal (aa1-30) Antibody - LS-C163299 - LSBio	
CatalogID:	LS-C163299
Target:	ovo-like zinc finger 1 (OVOL1)
Synonyms:	OVOL1 Antibody, HOVO1 Antibody, Ovo-like 1(Drosophila) Antibody, Ovo homolog-like 1 Antibody
Host	OVOL1 antibody was produced in Rabbit
Clonality:	Polyclonal
Immunogen Species:	OVOL1 antibody was raised against Human
Antigen Type:	Synthetic peptide
Immunogen:	OVOL1 antibody was raised against kLH-conjugated synthetic peptide from N-terminal region of human OVOL1.
Specificity:	Human OVOL1
Epitope:	aa1-30
Reactivity:	Human
Purification:	Immunoaffinity purified
Presentation:	PBS, 0.09% sodium azide
Recommended Storage:	Maintain refrigerated at 2-8°C for up to 6 months. For long term storage store at -20°C.
Uses:	Western blot (1:1000) (Optimal dilution to be determined by the researcher)
Size:	400 µl

Western Blot Image:



OVOL1 Antibody (N-term) Western blot of Jurkat cell line lysates (35 ug/lane). This demonstrates the OVOL1 antibody detected the OVOL1 protein (arrow).

Requested From:

Japan

Laboratory Reagent For In Vitro Research Use Only

Not for resale without prior written consent from LifeSpan BioSciences, Inc.

Created on 9/26/2014

© 2014 LifeSpan BioSciences