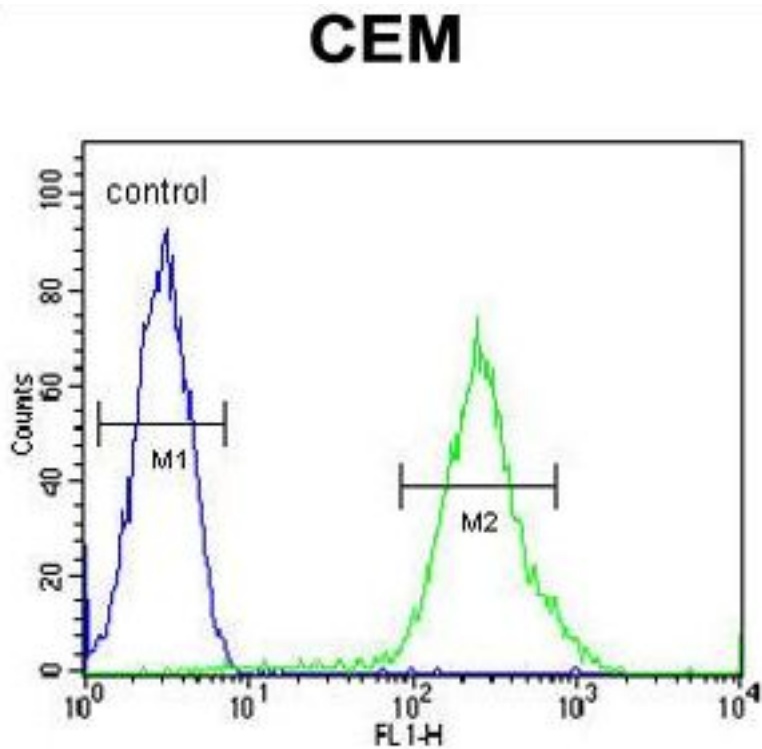


**C6orf108 Rabbit anti-Human Polyclonal (aa27-56) Antibody - LS-C162517 - LSBio**

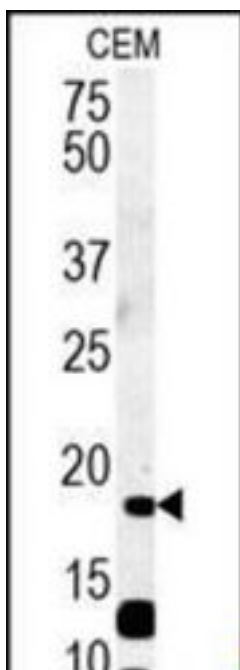
<b>CatalogID:</b>	LS-C162517
<b>Target:</b>	2'-deoxynucleoside 5'-phosphate N-hydrolase 1 (DNPH1)
<b>Synonyms:</b>	DNPH1 Antibody, C6orf108 Antibody, DJ330M21.3 Antibody, RCL Antibody, RP3-330M21.3 Antibody, C-Myc-responsive protein Rcl Antibody, Putative c-Myc-responsive Antibody
<b>Host</b>	DNPH1 antibody was produced in Rabbit
<b>Clonality:</b>	Polyclonal
<b>Immunogen Species:</b>	C6orf108 antibody was raised against Human
<b>Antigen Type:</b>	Synthetic peptide
<b>Immunogen:</b>	C6orf108 antibody was raised against kLH-conjugated synthetic peptide from N-terminal region of human RCL.
<b>Specificity:</b>	Human C6orf108
<b>Epitope:</b>	aa27-56
<b>Reactivity:</b>	Human
<b>Purification:</b>	Immunoaffinity purified
<b>Presentation:</b>	PBS, 0.09% sodium azide
<b>Recommended Storage:</b>	Maintain refrigerated at 2-8°C for up to 6 months. For long term storage store at -20°C.
<b>Uses:</b>	Western blot (1:1000), Flow Cytometry (1:10 - 1:50) (Optimal dilution to be determined by the researcher)
<b>Size:</b>	400 µl

**Flow Cytometry Image:**



RCL Antibody (N-term) flow cytometry of CEM cells (right histogram) compared to a negative control cell (left histogram). FITC-conjugated goat-anti-rabbit secondary antibodies were used for the analysis.

**Western Blot Image:**



RCL Antibody (N-term) Western blot of CEM cell line lysates (35 ug/lane). This demonstrates the RCL antibody detected the RCL protein (arrow).

<b>Requested From:</b>	Japan
Laboratory Reagent For In Vitro Research Use Only	
Not for resale without prior written consent from LifeSpan BioSciences, Inc.	
Created on 9/26/2014	
© 2014 LifeSpan BioSciences	