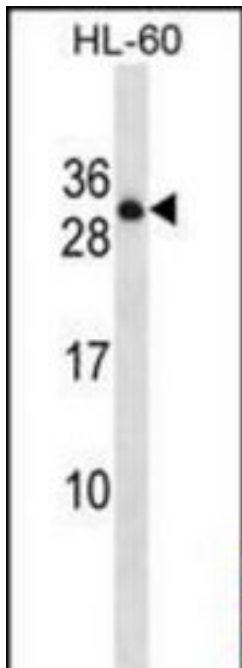


PTPRCAP / CD45 AP Rabbit anti-Human Polyclonal (aa89-118) Antibody - LS-C162311 - LSBio	
CatalogID:	LS-C162311
Target:	protein tyrosine phosphatase, receptor type, C-associated protein (PTPRCAP)
Synonyms:	PTPRCAP Antibody, CD45-associated protein Antibody, LPAP Antibody, CD45 associated protein Antibody, CD45-AP Antibody, PTPRC-associated protein Antibody
Host	PTPRCAP antibody was produced in Rabbit
Clonality:	Polyclonal
Immunogen Species:	PTPRCAP / CD45 AP antibody was raised against Human
Antigen Type:	Synthetic peptide
Immunogen:	PTPRCAP / CD45 AP antibody was raised against kLH-conjugated synthetic peptide from internal region of human PTPRCAP.
Specificity:	Human PTPRCAP
Epitope:	aa89-118
Reactivity:	Human
Purification:	Immunoaffinity purified
Presentation:	PBS, 0.09% sodium azide
Recommended Storage:	Maintain refrigerated at 2-8°C for up to 6 months. For long term storage store at -20°C.
Uses:	Western blot (1:1000) (Optimal dilution to be determined by the researcher)
Size:	400 µl

Western Blot Image:



PTPRCAP Antibody (Center) Western blot of HL-60 cell line lysates (35 ug/lane). This demonstrates the PTPRCAP antibody detected the PTPRCAP protein (arrow).

Requested From:

Japan

Laboratory Reagent For In Vitro Research Use Only

Not for resale without prior written consent from LifeSpan BioSciences, Inc.

Created on 9/26/2014

© 2014 LifeSpan BioSciences