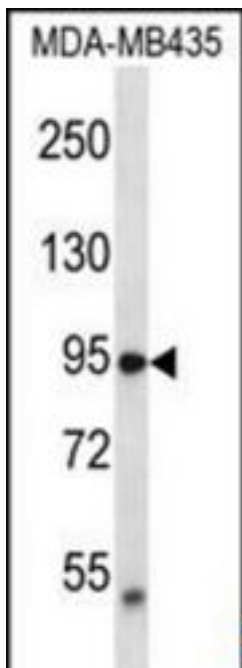


VRL1 / TRPV2 Rabbit anti-Human Polyclonal (aa51-81) Antibody - LS-C160238 - LSBio

CatalogID:	LS-C160238
Target:	transient receptor potential cation channel, subfamily V, member 2 (TRPV2)
Synonyms:	TRPV2 Antibody, GRC Antibody, OTRPC2 Antibody, Osm-9-like TRP channel 2 Antibody, VRL-1 Antibody, VRL1 Antibody, VRL Antibody
Family / Subfamily:	Ion Channel / Calcium channel - TRP
Host	TRPV2 antibody was produced in Rabbit
Clonality:	Polyclonal
Immunogen Species:	VRL1 / TRPV2 antibody was raised against Human
Antigen Type:	Synthetic peptide
Immunogen:	VRL1 / TRPV2 antibody was raised against kLH-conjugated synthetic peptide from N-terminal region of human TRPV2.
Specificity:	Human TRPV2
Epitope:	aa51-81
Reactivity:	Human
Purification:	Immunoaffinity purified
Presentation:	PBS, 0.09% sodium azide
Recommended Storage:	Maintain refrigerated at 2-8°C for up to 6 months. For long term storage store at -20°C.
Uses:	Western blot (1:1000) (Optimal dilution to be determined by the researcher)
Size:	400 µl

Western Blot Image:



TRPV2 Antibody (N-term) Western blot of MDA-MB435 cell line lysates (35 ug/lane). This demonstrates the TRPV2 antibody detected the TRPV2 protein (arrow).

Requested From:

Japan

Laboratory Reagent For In Vitro Research Use Only

Not for resale without prior written consent from LifeSpan BioSciences, Inc.

Created on 9/25/2014

© 2014 LifeSpan BioSciences