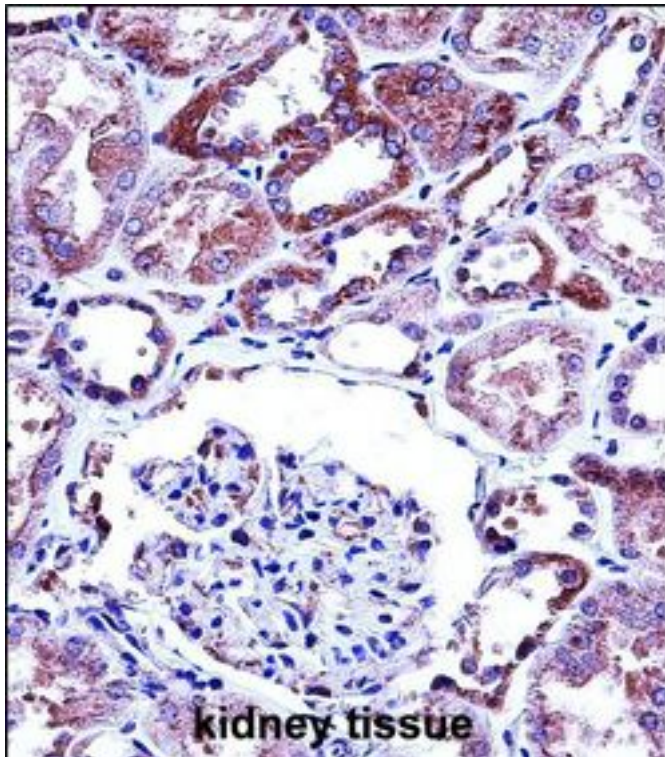


VR1 / TRPV1 Rabbit anti-Human Polyclonal (aa123-153) Antibody - LS-C160237 - LSBio

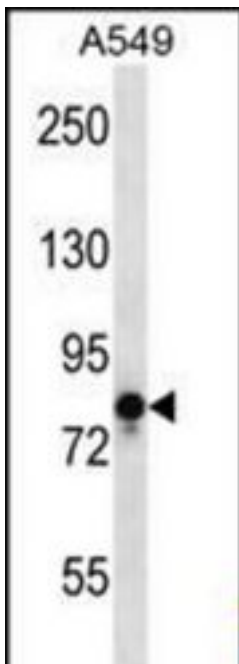
CatalogID:	LS-C160237
Target:	transient receptor potential cation channel, subfamily V, member 1 (TRPV1)
Synonyms:	TRPV1 Antibody, Capsaicin receptor Antibody, OTRPC1 Antibody, Vanilloid receptor subtype 1 Antibody, Osm-9-like TRP channel 1 Antibody, Vanilloid receptor 1 Antibody, VR1 Antibody
Family / Subfamily:	Ion Channel / Calcium channel - TRP
Host	TRPV1 antibody was produced in Rabbit
Clonality:	Polyclonal
Immunogen Species:	VR1 / TRPV1 antibody was raised against Human
Antigen Type:	Synthetic peptide
Immunogen:	VR1 / TRPV1 antibody was raised against kLH-conjugated synthetic peptide from N-terminal region of human TRPV1.
Specificity:	Human VR1 / TRPV1
Epitope:	aa123-153
Reactivity:	Human
Purification:	Immunoaffinity purified
Presentation:	PBS, 0.09% sodium azide
Recommended Storage:	Maintain refrigerated at 2-8°C for up to 6 months. For long term storage store at -20°C.
Uses:	IHC - Paraffin (1:10 - 1:50), Western blot (1:1000) (Optimal dilution to be determined by the researcher)
Size:	400 µl

Immunohistochemistry Image:



TRPV1 Antibody (N-term) IHC of formalin fixed and paraffin embedded human kidney tissue followed by peroxidase conjugation of the secondary antibody and DAB staining. This demonstrates the use of TRPV1 Antibody (N-term) for immunohistochemistry.

Western Blot Image:



TRPV1 Antibody (N-term) Western blot of A549 cell line lysates (35 ug/lane). This demonstrates the TRPV1 antibody detected the TRPV1 protein (arrow).

Requested From:

Japan

Laboratory Reagent For In Vitro Research Use Only

Not for resale without prior written consent from LifeSpan BioSciences, Inc.

Created on 9/25/2014

© 2014 LifeSpan BioSciences