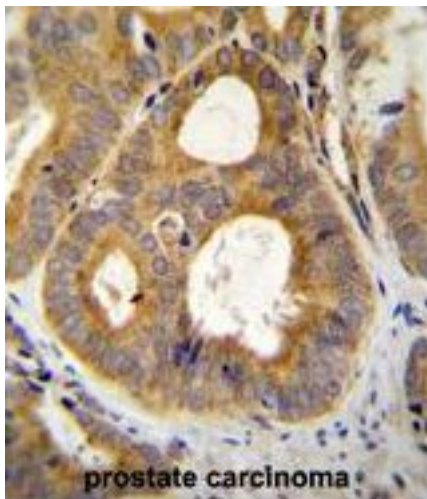


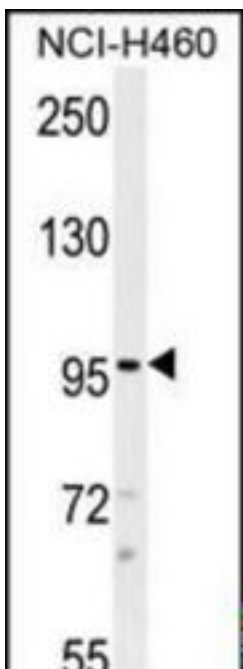
TRPM8 Rabbit anti-Human Polyclonal (aa76-106) Antibody - LS-C160236 - LSBio	
CatalogID:	LS-C160236
Target:	transient receptor potential cation channel, subfamily M, member 8 (TRPM8)
Synonyms:	TRPM8 Antibody, CMR1 Antibody, Cold-menthol receptor type 1 Antibody, LTrpC-6 Antibody, TRPP8 Antibody, Trp-p8 Antibody, LTRPC6 Antibody
Family / Subfamily:	Ion Channel / Calcium channel - TRP
Host	TRPM8 antibody was produced in Rabbit
Clonality:	Polyclonal
Immunogen Species:	TRPM8 antibody was raised against Human
Antigen Type:	Synthetic peptide
Immunogen:	TRPM8 antibody was raised against kLH-conjugated synthetic peptide from N-terminal region of human TRPM8.
Specificity:	Human TRPM8
Epitope:	aa76-106
Reactivity:	Human
Purification:	Ammonium sulfate precipitation
Presentation:	PBS, 0.09% sodium azide
Recommended Storage:	Maintain refrigerated at 2-8°C for up to 6 months. For long term storage store at -20°C.
Uses:	IHC - Paraffin (1:50 - 1:100), Western blot (1:1000) (Optimal dilution to be determined by the researcher)
Size:	400 µl

Immunohistochemistry Image:



TRPM8 Antibody (N-term) IHC of formalin fixed and paraffin embedded human prostate carcinoma followed by peroxidase conjugation of the secondary antibody and DAB staining. This demonstrates the use of TRPM8 Antibody (N-term) for immunohistochemistry.

Western Blot Image:



TRPM8 Antibody (N-term) Western blot of NCI-H460 cell line lysates (35 ug/lane). This demonstrates the TRPM8 antibody detected the TRPM8 protein (arrow).

Requested From:

Japan

Laboratory Reagent For In Vitro Research Use Only

Not for resale without prior written consent from LifeSpan BioSciences, Inc.

Created on 9/25/2014

© 2014 LifeSpan BioSciences