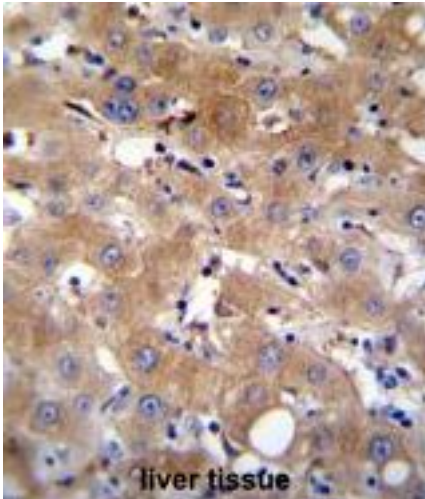


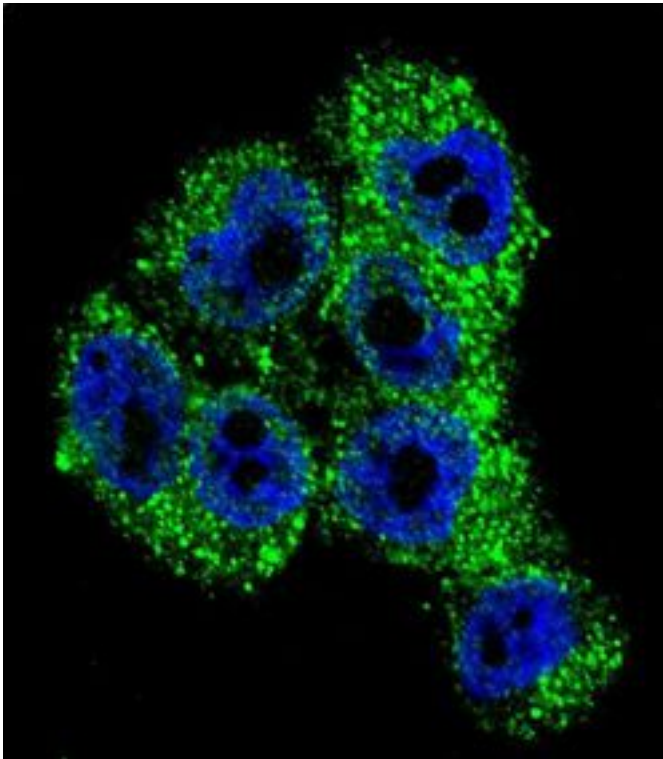
TRPM8 Rabbit anti-Human Polyclonal (aa270-300) Antibody - LS-C160235 - LSBio	
CatalogID:	LS-C160235
Target:	transient receptor potential cation channel, subfamily M, member 8 (TRPM8)
Synonyms:	TRPM8 Antibody, CMR1 Antibody, Cold-menthol receptor type 1 Antibody, LTrpC-6 Antibody, TRPP8 Antibody, Trp-p8 Antibody, LTRPC6 Antibody
Family / Subfamily:	Ion Channel / Calcium channel - TRP
Host	TRPM8 antibody was produced in Rabbit
Clonality:	Polyclonal
Immunogen Species:	TRPM8 antibody was raised against Human
Antigen Type:	Synthetic peptide
Immunogen:	TRPM8 antibody was raised against kLH-conjugated synthetic peptide from internal region of human TRPM8.
Specificity:	Human TRPM8
Epitope:	aa270-300
Reactivity:	Human
Purification:	Ammonium sulfate precipitation
Presentation:	PBS, 0.09% sodium azide
Recommended Storage:	Maintain refrigerated at 2-8°C for up to 6 months. For long term storage store at -20°C.
Uses:	IHC - Paraffin (1:50 - 1:100), Immunofluorescence (1:10 - 1:50), Western blot (1:1000) (Optimal dilution to be determined by the researcher)
Size:	400 µl

Immunohistochemistry Image:



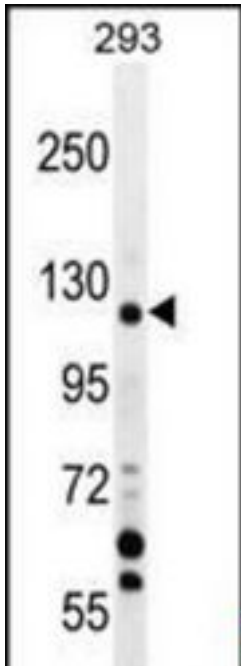
TRPM8 Antibody (Center) IHC of formalin fixed and paraffin embedded human liver tissue followed by peroxidase conjugation of the secondary antibody and DAB staining. This demonstrates the use of TRPM8 Antibody (Center) for immunohistochemistry.

Immunofluorescence Image:



Confocal immunofluorescence of TRPM8 Antibody (Center) with A375 cell followed by Alexa Fluor 488-conjugated goat anti-rabbit IgG (green). DAPI was used to stain the cell nuclear (blue).

Western Blot Image:



TRPM8 Antibody (Center) Western blot of 293 cell line lysates (35 ug/lane). This demonstrates the TRPM8 antibody detected the TRPM8 protein (arrow).

Requested From:

Japan

Laboratory Reagent For In Vitro Research Use Only

Not for resale without prior written consent from LifeSpan BioSciences, Inc.

Created on 9/25/2014

© 2014 LifeSpan BioSciences