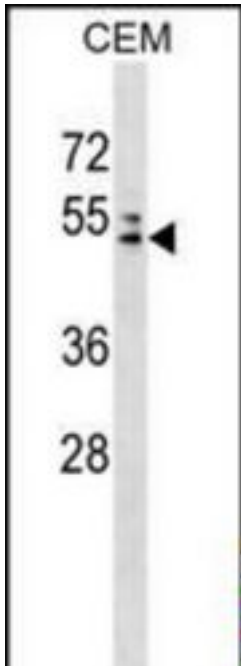


**AP4M1 Rabbit anti-Human Polyclonal (aa222-251) Antibody - LS-C159084 - LSBio**

<b>CatalogID:</b>	LS-C159084
<b>Target:</b>	adaptor-related protein complex 4, mu 1 subunit (AP4M1)
<b>Synonyms:</b>	AP4M1 Antibody, AP-4 complex subunit mu-1 Antibody, MU-4 Antibody, MU-ARP2 Antibody, Mu-adaptin-related protein 2 Antibody, Mu4-adaptin Antibody, MUARP2 Antibody, SPG50 Antibody, Mu subunit of AP-4 Antibody, Mu-adaptin-related protein-2 Antibody, Mu4 Antibody, CPSQ3 Antibody
<b>Host</b>	AP4M1 antibody was produced in Rabbit
<b>Clonality:</b>	Polyclonal
<b>Immunogen Species:</b>	AP4M1 antibody was raised against Human
<b>Antigen Type:</b>	Synthetic peptide
<b>Immunogen:</b>	AP4M1 antibody was raised against kLH-conjugated synthetic peptide from internal region of human AP4M1.
<b>Specificity:</b>	Human AP4M1
<b>Epitope:</b>	aa222-251
<b>Reactivity:</b>	Human
<b>Purification:</b>	Immunoaffinity purified
<b>Presentation:</b>	PBS, 0.09% sodium azide
<b>Recommended Storage:</b>	Maintain refrigerated at 2-8°C for up to 6 months. For long term storage store at -20°C.
<b>Uses:</b>	Western blot (1:1000) (Optimal dilution to be determined by the researcher)
<b>Size:</b>	400 µl

**Western Blot Image:**



AP4M1 Antibody (Center) Western blot of CEM cell line lysates (35 ug/lane). This demonstrates the AP4M1 antibody detected the AP4M1 protein (arrow).

**Requested From:**

Japan

Laboratory Reagent For In Vitro Research Use Only

Not for resale without prior written consent from LifeSpan BioSciences, Inc.

Created on 9/25/2014

© 2014 LifeSpan BioSciences