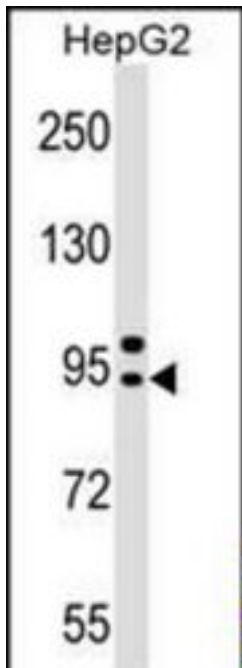


AP4B1 Rabbit anti-Human Polyclonal (aa491-520) Antibody - LS-C159083 - LSBio

CatalogID:	LS-C159083
Target:	Adaptor-related Protein Complex 4, Beta 1 Subunit (AP4B1)
Synonyms:	AP4B1 Antibody, Beta subunit of AP-4 Antibody, CPSQ5 Antibody, Spastic paraplegia 47 Antibody, AP-4 complex subunit beta-1 Antibody, Beta 4 subunit of AP-4 Antibody, BETA-4 Antibody, Beta4-adaptin Antibody, SPG47 Antibody
Host	AP4B1 antibody was produced in Rabbit
Clonality:	Polyclonal
Immunogen Species:	AP4B1 antibody was raised against Human
Antigen Type:	Synthetic peptide
Immunogen:	AP4B1 antibody was raised against kLH-conjugated synthetic peptide from internal region of human AP4B1.
Specificity:	Human AP4B1
Epitope:	aa491-520
Reactivity:	Human
Purification:	Immunoaffinity purified
Presentation:	PBS, 0.09% sodium azide
Recommended Storage:	Maintain refrigerated at 2-8°C for up to 6 months. For long term storage store at -20°C.
Uses:	Western blot (1:1000) (Optimal dilution to be determined by the researcher)
Size:	400 µl

Western Blot Image:



AP4B1 Antibody (Center) Western blot of HepG2 cell line lysates (35 ug/lane). This demonstrates the AP4B1 antibody detected the AP4B1 protein (arrow).

Requested From:

Japan

Laboratory Reagent For In Vitro Research Use Only

Not for resale without prior written consent from LifeSpan BioSciences, Inc.

Created on 9/25/2014

© 2014 LifeSpan BioSciences