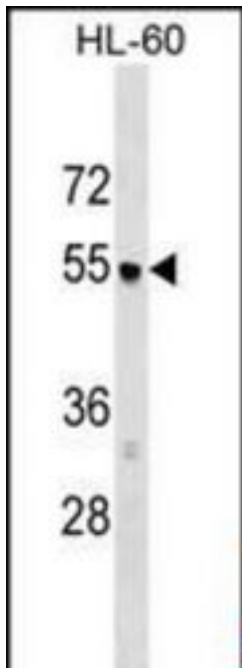


AP3M1 Rabbit anti-Human Polyclonal (aa389-418) Antibody - LS-C159082 - LSBio

CatalogID:	LS-C159082
Target:	Adaptor-related Protein Complex 3, Mu 1 Subunit (AP3M1)
Synonyms:	AP3M1 Antibody, AP-3 complex subunit mu-1 Antibody, Mu3A-adaptin Antibody, Mu-adaptin 3A Antibody
Host	AP3M1 antibody was produced in Rabbit
Clonality:	Polyclonal
Immunogen Species:	AP3M1 antibody was raised against Human
Antigen Type:	Synthetic peptide
Immunogen:	AP3M1 antibody was raised against kLH-conjugated synthetic peptide from C-terminal region of human AP3M1.
Specificity:	Human AP3M1
Epitope:	aa389-418
Reactivity:	Human
Purification:	Immunoaffinity purified
Presentation:	PBS, 0.09% sodium azide
Recommended Storage:	Maintain refrigerated at 2-8°C for up to 6 months. For long term storage store at -20°C.
Uses:	Western blot (1:1000) (Optimal dilution to be determined by the researcher)
Size:	400 µl

Western Blot Image:



AP3M1 Antibody (C-term) Western blot of HL-60 cell line lysates (35 ug/lane). This demonstrates the AP3M1 antibody detected the AP3M1 protein (arrow).

Requested From:

Japan

Laboratory Reagent For In Vitro Research Use Only

Not for resale without prior written consent from LifeSpan BioSciences, Inc.

Created on 9/25/2014

© 2014 LifeSpan BioSciences