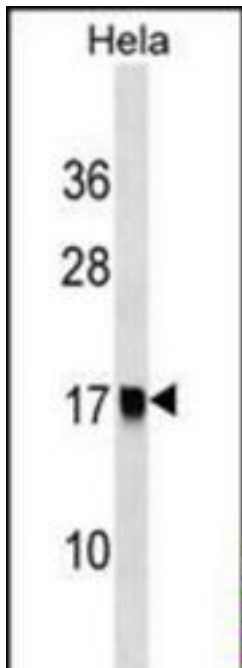


**AP2S1 Rabbit anti-Human Polyclonal (aa35-64) Antibody - LS-C159081 - LSBio**

<b>CatalogID:</b>	LS-C159081
<b>Target:</b>	adaptor-related protein complex 2, sigma 1 subunit (AP2S1)
<b>Synonyms:</b>	AP2S1 Antibody, AP17-DELTA Antibody, AP-2 complex subunit sigma Antibody, AP17 Antibody, CLAPS2 Antibody, HA2 17 kDa subunit Antibody, Sigma2-adaptin Antibody
<b>Host</b>	AP2S1 antibody was produced in Rabbit
<b>Clonality:</b>	Polyclonal
<b>Immunogen Species:</b>	AP2S1 antibody was raised against Human
<b>Antigen Type:</b>	Synthetic peptide
<b>Immunogen:</b>	AP2S1 antibody was raised against kLH-conjugated synthetic peptide from internal region of human AP2S1.
<b>Specificity:</b>	Human AP2S1
<b>Epitope:</b>	aa35-64
<b>Reactivity:</b>	Human
<b>Purification:</b>	Immunoaffinity purified
<b>Presentation:</b>	PBS, 0.09% sodium azide
<b>Recommended Storage:</b>	Maintain refrigerated at 2-8°C for up to 6 months. For long term storage store at -20°C.
<b>Uses:</b>	Western blot (1:1000) (Optimal dilution to be determined by the researcher)
<b>Size:</b>	400 µl

**Western Blot Image:**



AP2S1 Antibody (Center) Western blot of HeLa cell line lysates (35 ug/lane). This demonstrates the AP2S1 antibody detected the AP2S1 protein (arrow).

**Requested From:**

Japan

Laboratory Reagent For In Vitro Research Use Only

Not for resale without prior written consent from LifeSpan BioSciences, Inc.

Created on 9/25/2014

© 2014 LifeSpan BioSciences