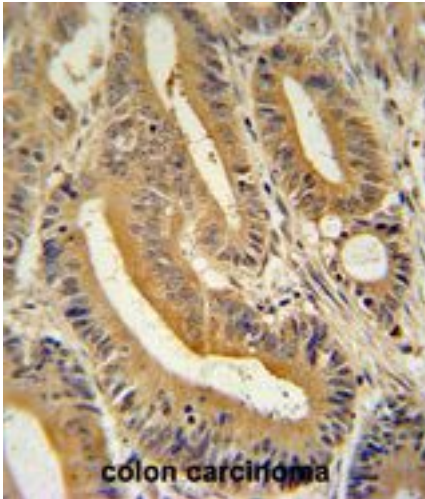


AP3S1 Rabbit anti-Human Polyclonal (aa2-31) Antibody - LS-C156392 - LSBio

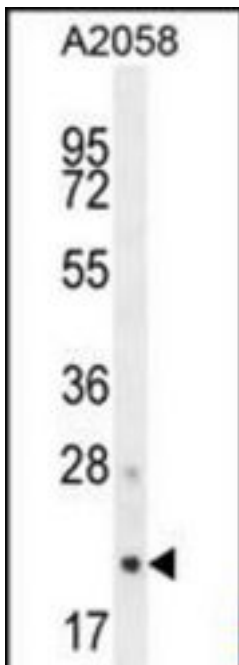
CatalogID:	LS-C156392
Target:	adaptor-related protein complex 3, sigma 1 subunit (AP3S1)
Synonyms:	AP3S1 Antibody, CLAPS3 Antibody, Sigma-3A-adaptin Antibody, Sigma3A Antibody, AP-3 complex sigma-3A subunit Antibody, AP-3 complex subunit sigma-1 Antibody, AP-3 complex subunit sigma-3A Antibody, Sigma3A-adaptin Antibody, Sigma-adaptin 3a Antibody
Host	AP3S1 antibody was produced in Rabbit
Clonality:	Polyclonal
Immunogen Species:	AP3S1 antibody was raised against Human
Antigen Type:	Synthetic peptide
Immunogen:	AP3S1 antibody was raised against kLH-conjugated synthetic peptide from N-terminal region of human AP3S1.
Specificity:	Human AP3S1
Epitope:	aa2-31
Reactivity:	Human, Mouse
Purification:	Immunoaffinity purified
Presentation:	PBS, 0.09% sodium azide
Recommended Storage:	Maintain refrigerated at 2-8°C for up to 6 months. For long term storage store at -20°C.
Uses:	IHC - Paraffin (1:50 - 1:100), Western blot (1:1000) (Optimal dilution to be determined by the researcher)
Size:	400 µl

Immunohistochemistry Image:



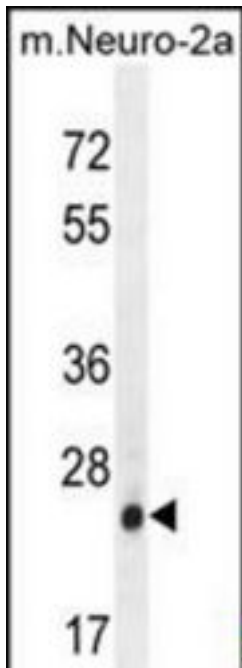
AP3S1 antibody (N-term) IHC of formalin fixed and paraffin embedded human colon carcinoma followed by peroxidase conjugation of the secondary antibody and DAB staining. This demonstrates the use of the AP3S1 antibody (N-term) for immunohistochemistry.

Western Blot Image:



AP3S1 Antibody (N-term) Western blot of A2058 cell line lysates (35 ug/lane). This demonstrates the AP3S1 antibody detected the AP3S1 protein (arrow).

Western Blot Image:



AP3S1 Antibody (N-term) Western blot of mouse Neuro-2a cell line lysates (35 ug/lane). This demonstrates the AP3S1 antibody detected the AP3S1 protein (arrow).

Requested From:

Japan

Laboratory Reagent For In Vitro Research Use Only

Not for resale without prior written consent from LifeSpan BioSciences, Inc.

Created on 9/25/2014

© 2014 LifeSpan BioSciences