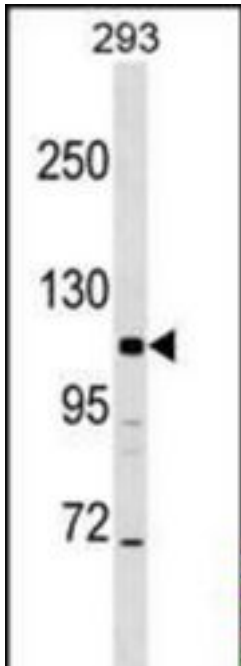


**AP3B2 Rabbit anti-Human Polyclonal (aa15-44) Antibody - LS-C156390 - LSBio**

<b>CatalogID:</b>	LS-C156390
<b>Target:</b>	adaptor-related protein complex 3, beta 2 subunit (AP3B2)
<b>Synonyms:</b>	AP3B2 Antibody, AP-3 complex subunit beta-2 Antibody, NAPT B Antibody, Beta-3B-adaptin Antibody
<b>Host</b>	AP3B2 antibody was produced in Rabbit
<b>Clonality:</b>	Polyclonal
<b>Immunogen Species:</b>	AP3B2 antibody was raised against Human
<b>Antigen Type:</b>	Synthetic peptide
<b>Immunogen:</b>	AP3B2 antibody was raised against kLH-conjugated synthetic peptide from N-terminal region of human AP3B2.
<b>Specificity:</b>	Human AP3B2
<b>Epitope:</b>	aa15-44
<b>Reactivity:</b>	Human
<b>Purification:</b>	Immunoaffinity purified
<b>Presentation:</b>	PBS, 0.09% sodium azide
<b>Recommended Storage:</b>	Maintain refrigerated at 2-8°C for up to 6 months. For long term storage store at -20°C.
<b>Uses:</b>	Western blot (1:1000) (Optimal dilution to be determined by the researcher)
<b>Size:</b>	400 µl

**Western Blot Image:**



AP3B2 Antibody (N-term) Western blot of 293 cell line lysates (35 ug/lane). This demonstrates the AP3B2 antibody detected the AP3B2 protein (arrow).

**Requested From:**

Japan

Laboratory Reagent For In Vitro Research Use Only

Not for resale without prior written consent from LifeSpan BioSciences, Inc.

Created on 9/25/2014

© 2014 LifeSpan BioSciences