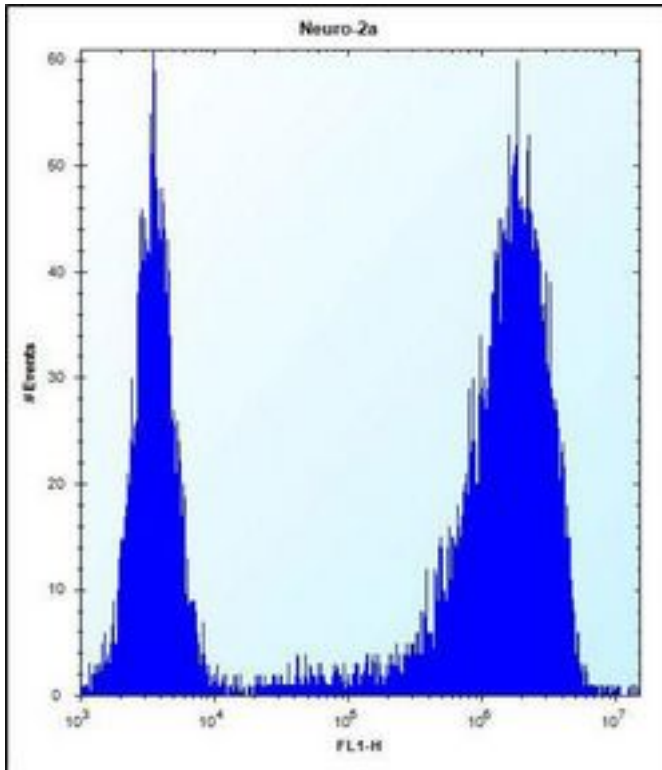


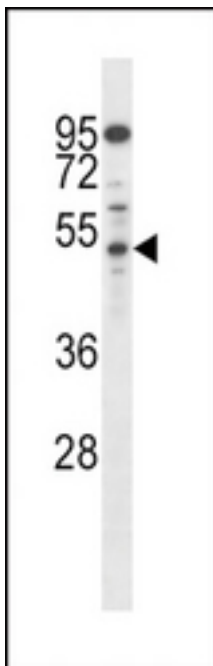
AP50 / AP2M1 Rabbit anti-Human Polyclonal (aa386-415) Antibody - LS-C156389 - LSBio	
CatalogID:	LS-C156389
Target:	adaptor-related protein complex 2, mu 1 subunit (AP2M1)
Synonyms:	AP2M1 Antibody, Adaptin-mu2 Antibody, AP-2 complex subunit mu Antibody, AP-2 mu 2 chain Antibody, AP-2 mu chain Antibody, AP50 Antibody, CLAPM1 Antibody, Mu2 Antibody, KIAA0109 Antibody, HA2 50 kDa subunit Antibody
Host	AP2M1 antibody was produced in Rabbit
Clonality:	Polyclonal
Immunogen Species:	AP50 / AP2M1 antibody was raised against Human
Antigen Type:	Synthetic peptide
Immunogen:	AP50 / AP2M1 antibody was raised against kLH-conjugated synthetic peptide from C-terminal region of human AP2M1.
Specificity:	Human AP50 / AP2M1
Epitope:	aa386-415
Reactivity:	Human, Mouse
Purification:	Immunoaffinity purified
Presentation:	PBS, 0.09% sodium azide
Recommended Storage:	Maintain refrigerated at 2-8°C for up to 6 months. For long term storage store at -20°C.
Uses:	Western blot (1:1000), Flow Cytometry (1:10 - 1:50) (Optimal dilution to be determined by the researcher)
Size:	400 µl

Flow Cytometry Image:



AP2M1 Antibody (C-term) flow cytometry of Neuro-2a cells (right histogram) compared to a negative control cell (left histogram). FITC-conjugated donkey-anti-rabbit secondary antibodies were used for the analysis.

Western Blot Image:



AP2M1 Antibody (C-term) Western blot of mouse Neuro-2a cell line lysates (35 ug/lane). This demonstrates the AP2M1 antibody detected the AP2M1 protein (arrow).

Requested From:	Japan
Laboratory Reagent For In Vitro Research Use Only	
Not for resale without prior written consent from LifeSpan BioSciences, Inc.	
Created on 9/25/2014	
© 2014 LifeSpan BioSciences	