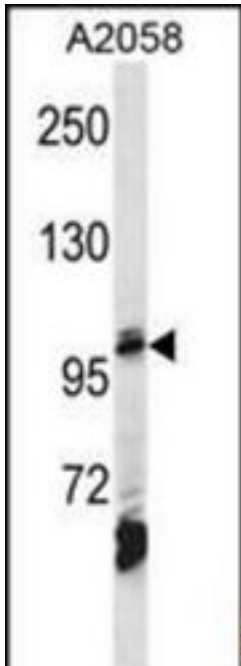


AP2B1 Rabbit anti-Human Polyclonal (aa516-546) Antibody - LS-C156388 - LSBio

| | |
|-----------------------------|--|
| CatalogID: | LS-C156388 |
| Target: | adaptor-related protein complex 2, beta 1 subunit (AP2B1) |
| Synonyms: | AP2B1 Antibody, Adaptin, beta 2 (beta) Antibody, ADTB2 Antibody, AP-2 complex subunit beta Antibody, AP2-BETA Antibody, Beta-adaptin Antibody, CLAPB1 Antibody, AP105B Antibody, Beta-2-adaptin Antibody |
| Host | AP2B1 antibody was produced in Rabbit |
| Clonality: | Polyclonal |
| Immunogen Species: | AP2B1 antibody was raised against Human |
| Antigen Type: | Synthetic peptide |
| Immunogen: | AP2B1 antibody was raised against kLH-conjugated synthetic peptide from internal region of human AP2B1. |
| Specificity: | Human AP2B1 |
| Epitope: | aa516-546 |
| Reactivity: | Human |
| Purification: | Immunoaffinity purified |
| Presentation: | PBS, 0.09% sodium azide |
| Recommended Storage: | Maintain refrigerated at 2-8°C for up to 6 months. For long term storage store at -20°C. |
| Uses: | Western blot (1:1000) (Optimal dilution to be determined by the researcher) |
| Size: | 400 µl |

Western Blot Image:



AP2B1 Antibody (Center) Western blot of A2058 cell line lysates (35 ug/lane). This demonstrates the AP2B1 antibody detected the AP2B1 protein (arrow).

Requested From:

Japan

Laboratory Reagent For In Vitro Research Use Only

Not for resale without prior written consent from LifeSpan BioSciences, Inc.

Created on 9/25/2014

© 2014 LifeSpan BioSciences