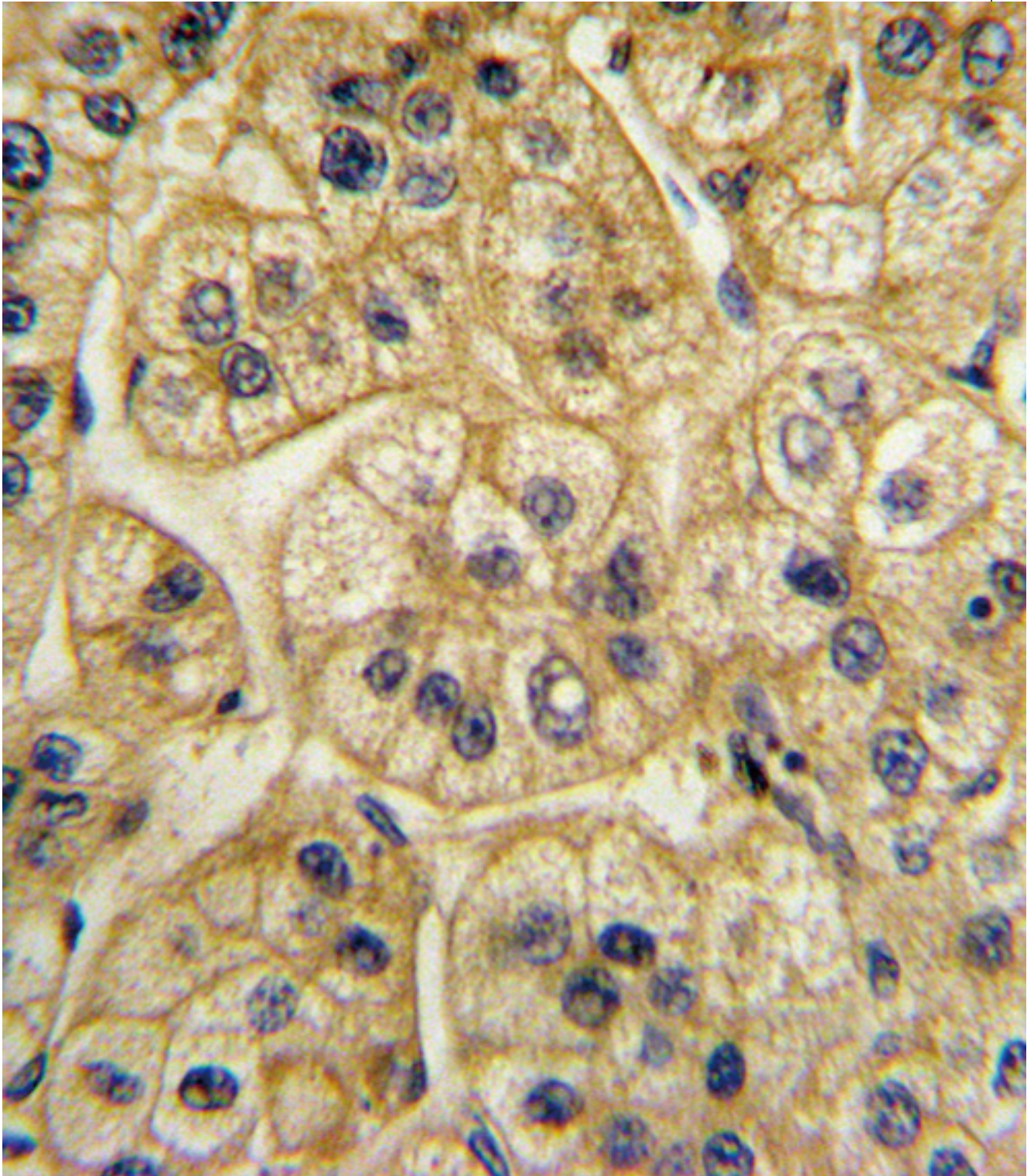


**AP2A2 Rabbit anti-Human Polyclonal (aa616-646) Antibody - LS-C156387 - LSBio**

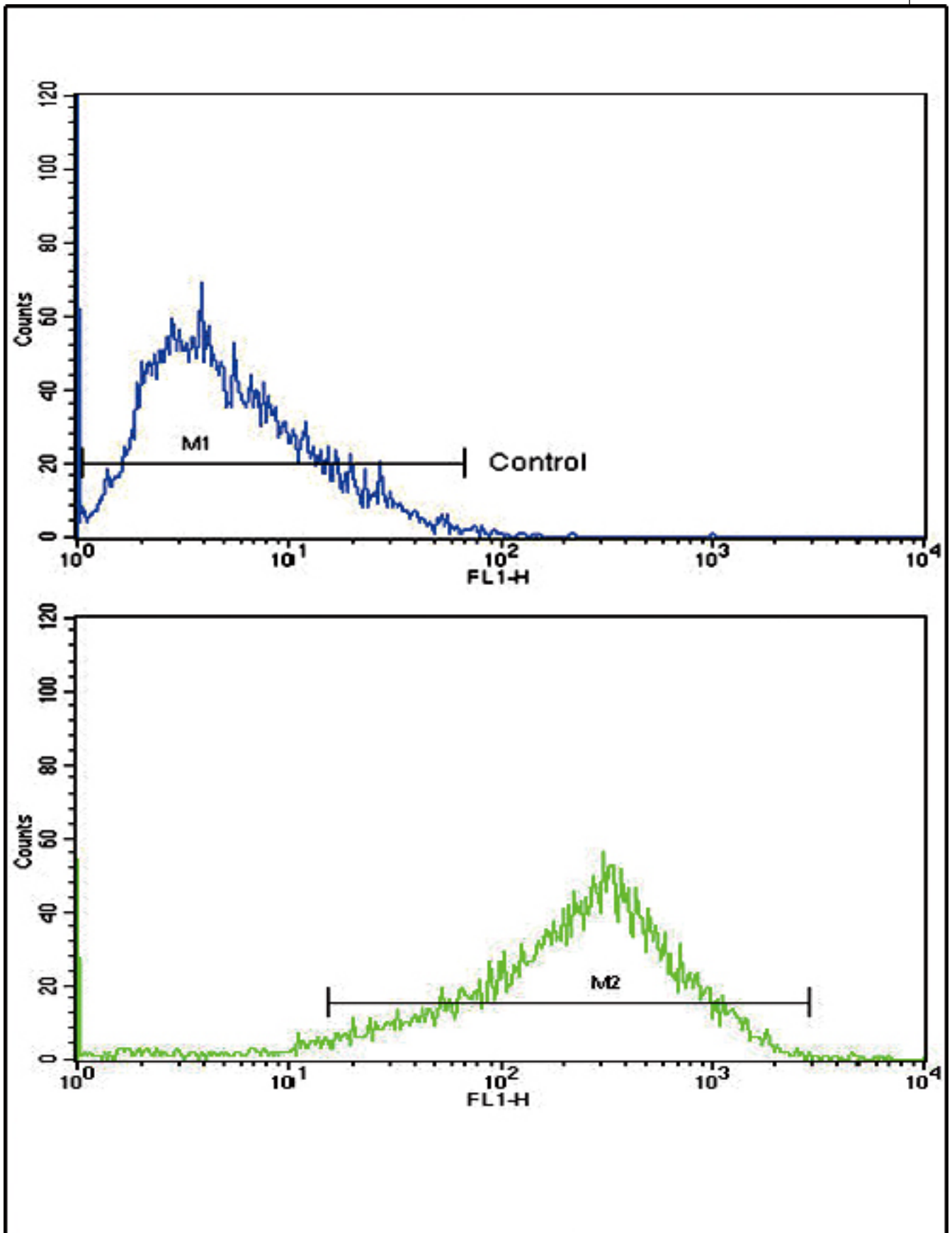
<b>CatalogID:</b>	LS-C156387
<b>Target:</b>	adaptor-related protein complex 2, alpha 2 subunit (AP2A2)
<b>Synonyms:</b>	AP2A2 Antibody, Adaptin, alpha B Antibody, ADTAB Antibody, Alpha-adaptin C Antibody, AP-2 complex subunit alpha-2 Antibody, CLAPA2 Antibody, DKFZP564D1864 Antibody, HIP-9 Antibody, HIP9 Antibody, Huntingtin yeast partner J Antibody, HYPJ Antibody, KIAA0899 Antibody, Alpha2-adaptin Antibody
<b>Host</b>	AP2A2 antibody was produced in Rabbit
<b>Clonality:</b>	Polyclonal
<b>Immunogen Species:</b>	AP2A2 antibody was raised against Human
<b>Antigen Type:</b>	Synthetic peptide
<b>Immunogen:</b>	AP2A2 antibody was raised against kLH-conjugated synthetic peptide from internal region of human AP2A2.
<b>Specificity:</b>	Human AP2A2
<b>Epitope:</b>	aa616-646
<b>Reactivity:</b>	Human
<b>Purification:</b>	Immunoaffinity purified
<b>Presentation:</b>	PBS, 0.09% sodium azide
<b>Recommended Storage:</b>	Maintain refrigerated at 2-8°C for up to 6 months. For long term storage store at -20°C.
<b>Uses:</b>	IHC - Paraffin (1:10 - 1:50), Western blot (1:1000), Flow Cytometry (1:10 - 1:50) (Optimal dilution to be determined by the researcher)
<b>Size:</b>	400 µl

**Immunohistochemistry Image:**



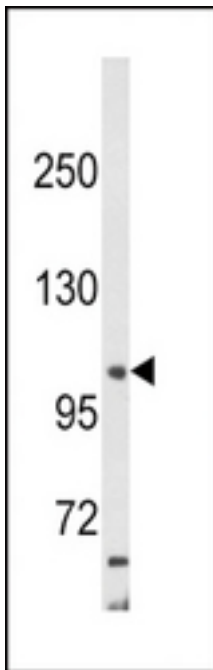
Formalin-fixed and paraffin-embedded human hepatocarcinoma with AP2A2 Antibody (Center), which was peroxidase-conjugated to the secondary antibody, followed by DAB staining.

Flow Cytometry Image:



Flow cytometry of HepG2 cells using AP2A2 Antibody (Center)(bottom histogram) compared to a negative control cell (top histogram). FITC-conjugated goat-anti-rabbit secondary antibodies were used for the analysis.

**Western Blot Image:**



Western blot of AP2A2 Antibody (Center) in HepG2 cell line lysates (35 ug/lane). AP2A2 (arrow) was detected using the purified Pab.

**Requested From:**

Japan

Laboratory Reagent For In Vitro Research Use Only

Not for resale without prior written consent from LifeSpan BioSciences, Inc.

Created on 9/25/2014

© 2014 LifeSpan BioSciences