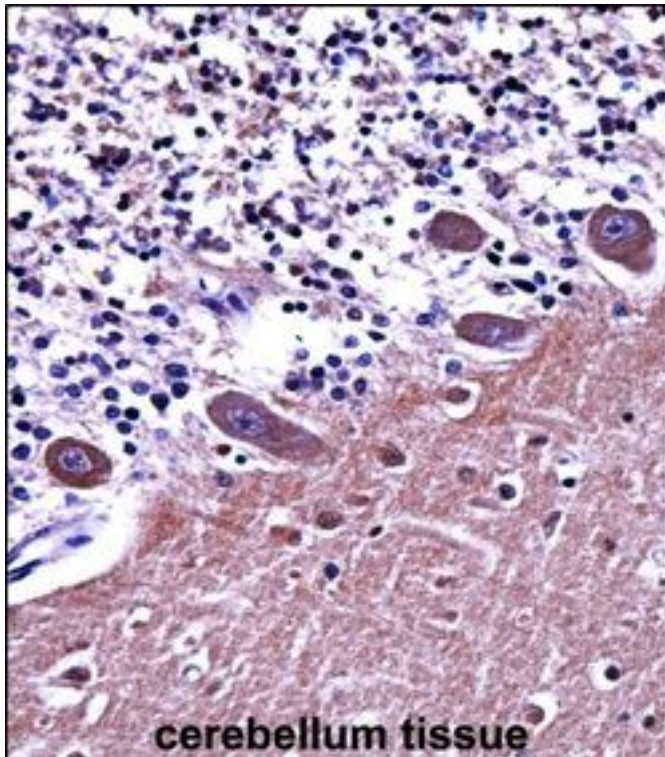


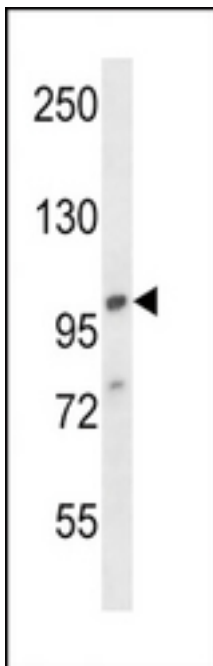
AP2A1 / AP2-Alpha Rabbit anti-Human Polyclonal (aa705-735) Antibody - LS-C156386 - LSBio	
<b>CatalogID:</b>	LS-C156386
<b>Target:</b>	adaptor-related protein complex 2, alpha 1 subunit (AP2A1)
<b>Synonyms:</b>	AP2A1 Antibody, Adaptin, alpha A Antibody, ADTAA Antibody, Alpha-adaptin A Antibody, Alpha1-adaptin Antibody, AP-2 complex subunit alpha-1 Antibody, AP2 Alpha Antibody, CLAPA1 Antibody, AP2-alpha Antibody
<b>Host</b>	AP2A1 antibody was produced in Rabbit
<b>Clonality:</b>	Polyclonal
<b>Immunogen Species:</b>	AP2A1 / AP2-Alpha antibody was raised against Human
<b>Antigen Type:</b>	Synthetic peptide
<b>Immunogen:</b>	AP2A1 / AP2-Alpha antibody was raised against kLH-conjugated synthetic peptide from C-terminal region of human AP2A1.
<b>Specificity:</b>	Human ADTAA / AP2 Alpha
<b>Epitope:</b>	aa705-735
<b>Reactivity:</b>	Human
<b>Purification:</b>	Immunoaffinity purified
<b>Presentation:</b>	PBS, 0.09% sodium azide
<b>Recommended Storage:</b>	Maintain refrigerated at 2-8°C for up to 6 months. For long term storage store at -20°C.
<b>Uses:</b>	IHC - Paraffin (1:10 - 1:50), Western blot (1:1000) (Optimal dilution to be determined by the researcher)
<b>Size:</b>	400 µl

**Immunohistochemistry Image:**



AP2A1 Antibody (C-term) IHC of formalin fixed and paraffin embedded human cerebellum tissue followed by peroxidase conjugation of the secondary antibody and DAB staining. This demonstrates the use of AP2A1 Antibody (C-term) for immunohistochemistry.

**Western Blot Image:**



AP2A1 Antibody (C-term) Western blot of 293 cell line lysates (35 ug/lane). This demonstrates the AP2A1 antibody detected the AP2A1 protein (arrow).

**Requested From:**

Japan

Laboratory Reagent For In Vitro Research Use Only

Not for resale without prior written consent from LifeSpan BioSciences, Inc.

Created on 9/25/2014

© 2014 LifeSpan BioSciences