

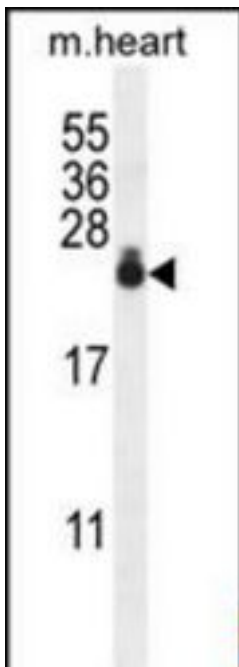
AP1S3 Rabbit anti-Human Polyclonal (aa15-45) Antibody - LS-C156384 - LSBio	
CatalogID:	LS-C156384
Target:	adaptor-related protein complex 1, sigma 3 subunit (AP1S3)
Synonyms:	AP1S3 Antibody, AP-1 complex subunit sigma-3 Antibody, Sigma1C-adaptin Antibody, Sigma 1C adaptin Antibody, Sigma-adaptin 1C Antibody
Host	AP1S3 antibody was produced in Rabbit
Clonality:	Polyclonal
Immunogen Species:	AP1S3 antibody was raised against Human
Antigen Type:	Synthetic peptide
Immunogen:	AP1S3 antibody was raised against kLH-conjugated synthetic peptide from N-terminal region of human AP1S3.
Specificity:	Human AP1S3
Epitope:	aa15-45
Reactivity:	Human, Mouse
Purification:	Immunoaffinity purified
Presentation:	PBS, 0.09% sodium azide
Recommended Storage:	Maintain refrigerated at 2-8°C for up to 6 months. For long term storage store at -20°C.
Uses:	IHC - Paraffin (1:50 - 1:100), Western blot (1:1000) (Optimal dilution to be determined by the researcher)
Size:	400 µl

Immunohistochemistry Image:



AP1S3 antibody (N-term) IHC of formalin fixed and paraffin embedded human skeletal muscle followed by peroxidase conjugation of the secondary antibody and DAB staining. This demonstrates the use of the AP1S3 antibody (N-term) for immunohistochemistry.

Western Blot Image:



AP1S3 Antibody (N-term) Western blot of mouse heart tissue lysates (35 ug/lane). This demonstrates the AP1S3 antibody detected the AP1S3 protein (arrow).

Requested From:

Japan

Laboratory Reagent For In Vitro Research Use Only

Not for resale without prior written consent from LifeSpan BioSciences, Inc.

Created on 9/25/2014

© 2014 LifeSpan BioSciences