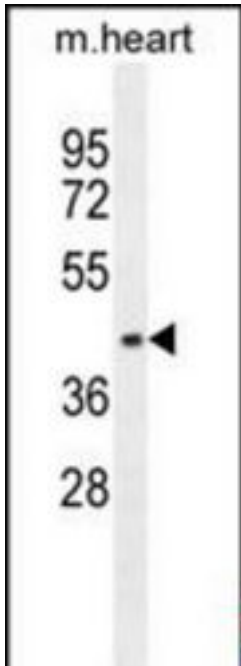


**AP1M1 Rabbit anti-Human Polyclonal (aa212-242) Antibody - LS-C156381 - LSBio**

<b>CatalogID:</b>	LS-C156381
<b>Target:</b>	Adaptor-related Protein Complex 1, Mu 1 Subunit (AP1M1)
<b>Synonyms:</b>	AP1M1 Antibody, AP47 Antibody, Clathrin adaptor protein AP47 Antibody, HA1 47 kDa subunit Antibody, Mu1A-adaptin Antibody, AP-1 complex subunit mu-1 Antibody, AP-mu chain family member mu1A Antibody, CLAPM2 Antibody, CLTNM Antibody, MU-1A Antibody, Mu-adaptin 1 Antibody
<b>Host</b>	AP1M1 antibody was produced in Rabbit
<b>Clonality:</b>	Polyclonal
<b>Immunogen Species:</b>	AP1M1 antibody was raised against Human
<b>Antigen Type:</b>	Synthetic peptide
<b>Immunogen:</b>	AP1M1 antibody was raised against kLH-conjugated synthetic peptide from internal region of human AP1M1.
<b>Specificity:</b>	Human AP1M1
<b>Epitope:</b>	aa212-242
<b>Reactivity:</b>	Human, Mouse
<b>Purification:</b>	Immunoaffinity purified
<b>Presentation:</b>	PBS, 0.09% sodium azide
<b>Recommended Storage:</b>	Maintain refrigerated at 2-8°C for up to 6 months. For long term storage store at -20°C.
<b>Uses:</b>	Western blot (1:1000) (Optimal dilution to be determined by the researcher)
<b>Size:</b>	400 µl

**Western Blot Image:**



AP1M1 Antibody (Center) Western blot of mouse heart tissue lysates (35 ug/lane). This demonstrates the AP1M1 antibody detected the AP1M1 protein (arrow).

**Requested From:**

Japan

Laboratory Reagent For In Vitro Research Use Only

Not for resale without prior written consent from LifeSpan BioSciences, Inc.

Created on 9/25/2014

© 2014 LifeSpan BioSciences