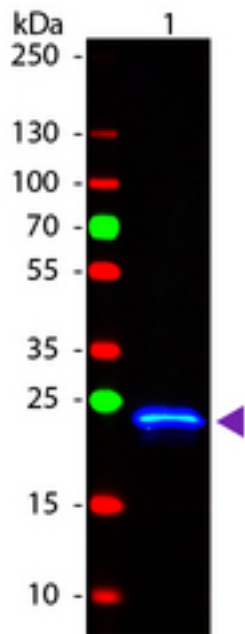


GST / Glutathione S-Transferase Rabbit anti-Schistosoma japonicum Polyclonal (FITC) Antibody - LS-C154265 - LSBio	
<b>CatalogID:</b>	LS-C154265
<b>Target:</b>	GST / Glutathione S-Transferase
<b>Host</b>	Rabbit
<b>Clonality:</b>	Polyclonal
<b>Isotype:</b>	IgG
<b>Conjugations:</b>	Fluorescein (FITC)
<b>Immunogen Species:</b>	Schistosoma japonicum
<b>Antigen Type:</b>	Recombinant protein
<b>Immunogen:</b>	The immunogen is full length GST isolated from Schistosoma japonicum.
<b>Specificity:</b>	Assay by immunoelectrophoresis resulted in a single precipitin arc against anti-Rabbit Serum as well as purified and partially purified Glutathione-S-Transferase [Schistosoma japonicum]. Cross reactivity against Glutathione-S-Transferase from other sources may occur but has not been specifically determined.
<b>Reactivity:</b>	Schistosoma japonicum
<b>Purification:</b>	Immunoaffinity purified
<b>Reconstitution:</b>	deionized water. Possible additional volumes for resuspension: 100 µl
<b>Presentation:</b>	0.02 M potassium phosphate, 0.15 M sodium chloride, pH 7.2, 1% BSA, 0.01% sodium azide
<b>Recommended Storage:</b>	Short term 4°C, long term aliquot and store at -20°C, avoid freeze thaw cycles.
<b>Usage Summary:</b>	FITC conjugated GST Antibody is ideal for microscopy and flow cytometry or FACS analysis as well as other antibody based fluorescent assays requiring lot-to-lot consistency.
<b>Uses:</b>	Immunofluorescence, Western blot, Flow Cytometry (Optimal dilution to be determined by the researcher)
<b>Size:</b>	100 µg

**Western Blot Image:**



Western Blot of Rabbit anti-GST Fluorescein Conjugated Antibody. Lane 1: GST. Lane 2: None. Load: 50 ng per lane. Primary antibody: None. Secondary antibody: Fluorescein rabbit secondary antibody at 1:1000 for 60 min at RT. Block: MB-070 for 30 min at RT. Predicted/Observed size: 28 kDa, 28 kDa for GST. Other band(s): None.

**Requested From:**

Japan

Laboratory Reagent For In Vitro Research Use Only

Not for resale without prior written consent from LifeSpan BioSciences, Inc.

Created on 9/25/2014

© 2014 LifeSpan BioSciences