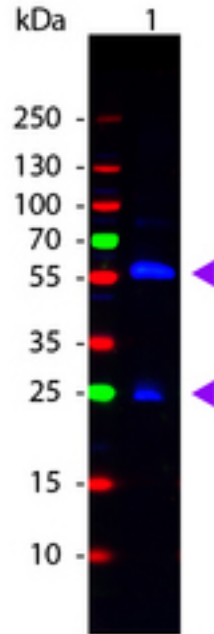


**Biotin Rabbit Polyclonal (FITC) Antibody - LS-C154264 - LSBio**

<b>CatalogID:</b>	LS-C154264
<b>Target:</b>	Biotin
<b>Host</b>	Biotin antibody was produced in Rabbit
<b>Clonality:</b>	Polyclonal
<b>Isotype:</b>	IgG
<b>Conjugations:</b>	Fluorescein (FITC)
<b>Antigen Type:</b>	Hapten
<b>Immunogen:</b>	Biotin antibody was raised against biotin conjugated to Keyhole Limpet Hemocyanin (KLH).
<b>Specificity:</b>	Assay by immunoelectrophoresis resulted in a single precipitin arc against anti-Fluorescein, anti-Rabbit Serum, Biotinylated IgG and Biotinylated Bovine Serum Albumin.
<b>Purification:</b>	Immunoaffinity purified
<b>Reconstitution:</b>	deionized water. Possible additional volumes for resuspension: 100 µl
<b>Presentation:</b>	0.02 M potassium phosphate, 0.15 M sodium chloride, pH 7.2, 1% BSA, 0.01% sodium azide
<b>Recommended Storage:</b>	Short term 4°C, long term aliquot and store at -20°C, avoid freeze thaw cycles.
<b>Usage Summary:</b>	Suitable for immunomicroscopy and flow cytometry or FACS analysis as well as other antibody based fluorescent assays requiring lot-to-lot consistency.
<b>Uses:</b>	Immunofluorescence (1:500 - 1:2500), Flow Cytometry (Optimal dilution to be determined by the researcher)
<b>Size:</b>	100 µl

**Western Blot Image:**



Western Blot of Rabbit anti-Biotin Fluorescein Conjugated Antibody. Lane 1: Biotin Conjugated Guinea Pig IgG. Lane 2: None. Load: 50 ng per lane. Primary antibody: None. Secondary antibody: Fluorescein rabbit secondary antibody at 1:1000 for 60 min at RT. Block: MB-070 for 30 min at RT. Predicted/Observed size: 28 & 55 kDa, 28 & 55 kDa for Guinea Pig IgG. Other band(s): None.

**Requested From:**

Japan

Laboratory Reagent For In Vitro Research Use Only

Not for resale without prior written consent from LifeSpan BioSciences, Inc.

Created on 9/25/2014

© 2014 LifeSpan BioSciences