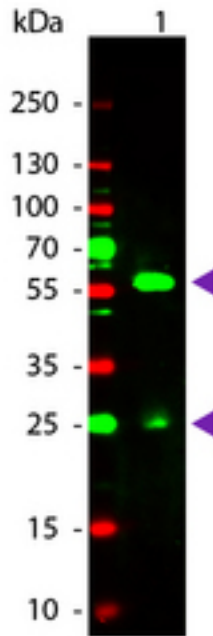


Biotin Rabbit Polyclonal (TRITC) Antibody - LS-C154214 - LSBio

CatalogID:	LS-C154214
Target:	Biotin
Host	Biotin antibody was produced in Rabbit
Clonality:	Polyclonal
Isotype:	IgG
Conjugations:	Tetramethyl Rhodamine Iso-Thiocyanate (TRITC)
Antigen Type:	Hapten
Immunogen:	Biotin antibody was raised against biotin conjugated to Keyhole Limpet Hemocyanin (KLH).
Specificity:	Assay by immunoelectrophoresis resulted in a single precipitin arc against anti-Rabbit Serum, Biotin conjugated IgG and Biotin conjugated Bovine Serum Albumin.
Purification:	Immunoaffinity purified
Reconstitution:	deionized water. Possible additional volumes for resuspension: 100 µl
Presentation:	0.02 M potassium phosphate, 0.15 M sodium chloride, pH 7.2, 1% BSA, 0.01% sodium azide
Recommended Storage:	Short term 4°C, long term aliquot and store at -20°C, avoid freeze thaw cycles.
Usage Summary:	Suitable for immunomicroscopy and flow cytometry or FACS analysis as well as other antibody based fluorescent assays requiring lot-to-lot consistency.
Uses:	Immunofluorescence (1:500 - 1:2500), Flow Cytometry (Optimal dilution to be determined by the researcher)
Size:	100 µl

Western Blot Image:



Western Blot of Rabbit anti-Biotin Rhodamine Conjugated Antibody. Lane 1: Biotin Conjugated Guinea Pig IgG. Lane 2: None. Load: 50 ng per lane. Primary antibody: None. Secondary antibody: Rhodamine rabbit secondary antibody at 1:1000 for 60 min at RT. Block: MB-070 for 30 min at RT. Predicted/Observed size: 28 & 55 kDa, 28 & 55 kDa for Guinea Pig IgG. Other band(s): None.

Requested From:

Japan

Laboratory Reagent For In Vitro Research Use Only

Not for resale without prior written consent from LifeSpan BioSciences, Inc.

Created on 9/25/2014

© 2014 LifeSpan BioSciences