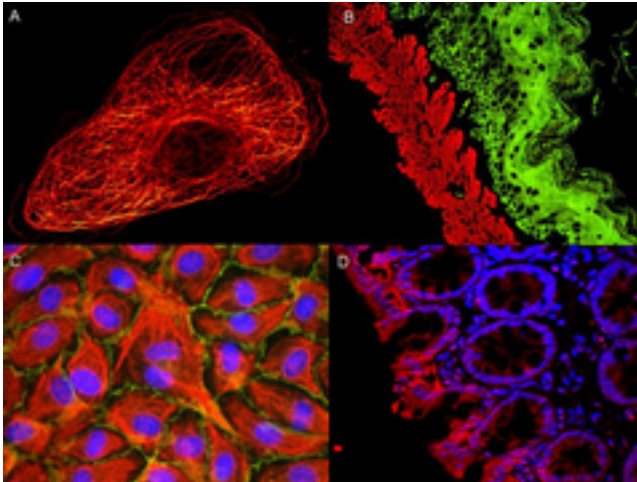


Goat IgG Rabbit anti-Goat Polyclonal (Atto 655) Antibody - LS-C153893 - LSBio

CatalogID:	LS-C153893
Target:	Goat IgG
Host	Goat IgG antibody was produced in Rabbit
Clonality:	Polyclonal
Isotype:	IgG
Conjugations:	Atto 655
Immunogen Species:	Goat IgG antibody was raised against Goat
Antigen Type:	Purified protein
Immunogen:	Goat IgG antibody was raised against goat IgG whole molecule.
Specificity:	Assay by immunoelectrophoresis resulted in a single precipitin arc against anti-Rabbit Serum, Goat IgG and Goat Serum. No reaction was observed against Human, Mouse or Rabbit Serum Proteins. This antibody will react with heavy chains of Goat IgG and with light chains of most Goat immunoglobulins.
Reactivity:	Goat
Purification:	Immunoaffinity purified
Reconstitution:	deionized water. Possible additional volumes for resuspension: 500 µl
Presentation:	0.02 M potassium phosphate, 0.15 M sodium chloride, pH 7.2, 1% BSA, 0.01% sodium azide
Recommended Storage:	Short term 4°C, long term aliquot and store at -20°C, avoid freeze thaw cycles.
Usage Summary:	The emission spectra for this ATTO conjugate matches the principle output wavelengths of most common fluorescence instrumentation.
Uses:	Immunofluorescence (1:5000), Western blot (1:10000), ELISA (1:20000) (Optimal dilution to be determined by the researcher)
Size:	500 µg

Immunocytochemistry Image:



ATTO dyes can be used for multicolor immunofluorescent detection with low background and high signal. Examples shown are: A. Tubulin in PtK2- male Rat Kangaroo Kidney Epithelial Cells was detected using ATTO 532 labeled secondary antibody. B. Muscle alpha-actin was stained with a mouse primary antibody and ATTO 488 anti-mouse IgG (green) while Cytokeratin was stained with polyclonal rabbit anti-cytokeratin and ATTO 647N anti-rabbit IgG (red). C. HUVEC (Human umbilical vein endothelial cells) were stained with anti- Vimentin-ATTO 532 (green), anti-E-Cadherin-ATTO 655 (red) and DAPI (blue). D. Rat colon sections were stained with Anti-Aquaporin 3-ATTO 594 antibody. Hoechst 33342 (blue) is used as counterstain. Images provided courtesy of Dr. Jrg Reichwein, ATTO-TEC GmbH

Requested From:

Japan

Laboratory Reagent For In Vitro Research Use Only

Not for resale without prior written consent from LifeSpan BioSciences, Inc.

Created on 9/25/2014

© 2014 LifeSpan BioSciences