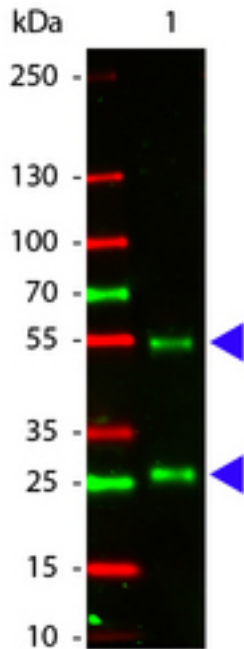


Goat IgG Rabbit anti-Goat Polyclonal (Atto 550) Antibody - LS-C153890 - LSBio

CatalogID:	LS-C153890
Target:	Goat IgG
Host	Goat IgG antibody was produced in Rabbit
Clonality:	Polyclonal
Isotype:	IgG
Conjugations:	Atto 550
Immunogen Species:	Goat IgG antibody was raised against Goat
Antigen Type:	Purified protein
Immunogen:	Goat IgG antibody was raised against goat IgG whole molecule.
Specificity:	Assay by immunoelectrophoresis resulted in a single precipitin arc against anti-Rabbit Serum, Goat IgG and Goat Serum. No reaction was observed against Human, Mouse or Rabbit Serum Proteins. This antibody will react with heavy chains of Goat IgG and with light chains of most Goat immunoglobulins.
Reactivity:	Goat
Purification:	Immunoaffinity purified
Reconstitution:	deionized water. Possible additional volumes for resuspension: 500 µl
Presentation:	0.02 M potassium phosphate, 0.15 M sodium chloride, pH 7.2, 1% BSA, 0.01% sodium azide
Recommended Storage:	Short term 4°C, long term aliquot and store at -20°C, avoid freeze thaw cycles.
Usage Summary:	The emission spectra for this ATTO conjugate matches the principle output wavelengths of most common fluorescence instrumentation.
Uses:	Immunofluorescence (1:5000), Western blot (1:10000), ELISA (1:20000) (Optimal dilution to be determined by the researcher)
Size:	500 µg

Western Blot Image:



Western Blot of Atto 550 conjugated Rabbit anti-Goat IgG antibody. Lane 1: Goat IgG. Lane 2: none. Load: 50 ng per lane. Primary antibody: none. Secondary antibody: Atto 550 rabbit secondary antibody at 1:1000 for 60 min at RT. Block: MB-070 for 30 min at RT. Predicted/Observed size: 55 kDa, 28 kDa for Goat IgG. Other band(s): none.

Requested From:

Japan

Laboratory Reagent For In Vitro Research Use Only

Not for resale without prior written consent from LifeSpan BioSciences, Inc.

Created on 9/25/2014

© 2014 LifeSpan BioSciences