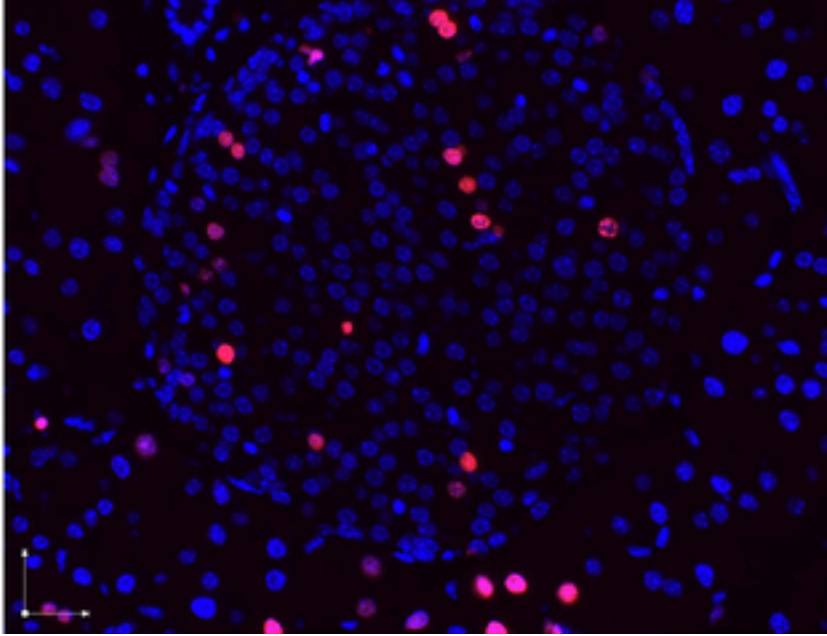


BrdU Rabbit Polyclonal Antibody - LS-C153851 - LSBio

CatalogID:	LS-C153851
Target:	Bromodeoxyuridine (BrdU)
Host	Bromodeoxyuridine (BrdU) antibody was produced in Rabbit
Clonality:	Polyclonal
Isotype:	IgG
Antigen Type:	Purified protein
Immunogen:	BrdU antibody was raised against anti-BrdU affinity purified antibody was purified from monospecific rabbit antiserum prepared via repeated immunizations with Bromodeoxyuridine-KLH.
Specificity:	Anti-BrdU Antibody was affinity purified from monospecific antiserum by immunoaffinity chromatography.
Purification:	Immunoaffinity purified
Presentation:	0.02 M potassium phosphate, 0.15 M sodium chloride, pH 7.2, 0.01% sodium azide, sterile filtered
Recommended Storage:	Short term 4°C, long term aliquot and store at -20°C, avoid freeze thaw cycles.
Usage Summary:	Anti-BrdU Antibody has been tested as suitable for immunofluorescence microscopy.
Uses:	Immunofluorescence (1:500) (Optimal dilution to be determined by the researcher)
Size:	100 µg
Concentration:	0.73 mg/ml

Immunofluorescence Image:



Immunofluorescence microscopy images of paraformaldehyde-fixed, paraffin-embedded pancreas sections stained with antibodies against BrdU (red or pink) and counterstained with DAPI (blue) and imaged with a 40 objective. DAPI stained nuclei (blue) indicate non-dividing cells, immunostained red and pink nuclei indicate actively dividing pancreatic -cells. The antibodies were diluted to 2.7 g/ml. and incubated with tissue sections overnight at 4 degrees. Donkey anti-rabbit secondary antibody was diluted 1:2500.

Requested From:

Japan

Laboratory Reagent For In Vitro Research Use Only

Not for resale without prior written consent from LifeSpan BioSciences, Inc.

Created on 9/25/2014

© 2014 LifeSpan BioSciences