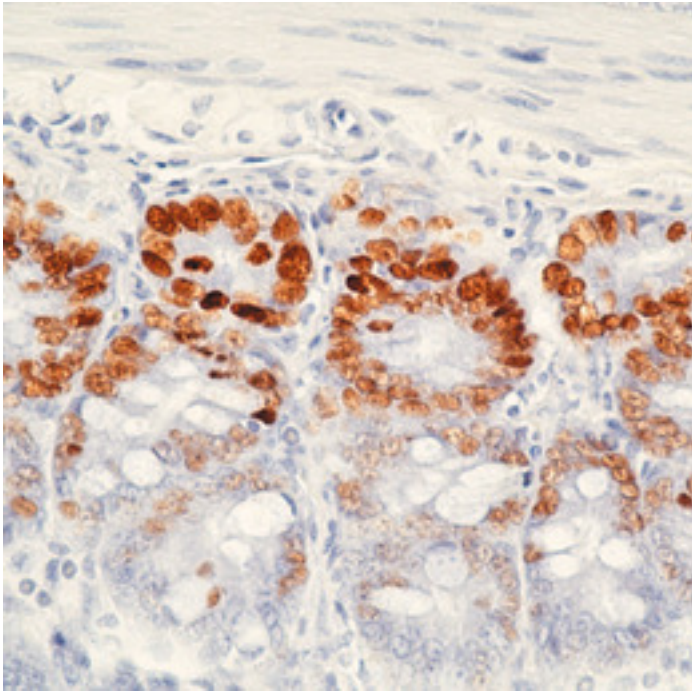


BrdU Mouse Monoclonal (MoBU) Antibody - LS-C140474 - LSBio

CatalogID:	LS-C140474
Target:	Bromodeoxyuridine (BrdU)
Host	Bromodeoxyuridine (BrdU) antibody was produced in Mouse
Clonality:	Monoclonal
Isotype:	IgG1
Clone Name:	MoBU
Antigen Type:	Hapten
Immunogen:	BrdU antibody was raised against bromodeoxyuridine conjugated to Helix Pomatia Hemocyanin used to immunize BALB/c mice.
Specificity:	Bromodeoxyuridine (BrdU)
Purification:	Protein A/G purified
Presentation:	PBS, 0.08% Sodium Azide
Recommended Storage:	Store at -20°C. Aliquot to avoid freeze/thaw cycles.
Usage Summary:	Reacts with cells containing incorporated BrdU, showing a clear, nucleus confined, speckled pattern. Optimal concentration should be evaluated by serial dilutions. Applications: Flow Cytometry Staining, Immunohistochemistry.
Uses:	IHC, Flow Cytometry (Optimal dilution to be determined by the researcher)
Size:	100 µg

Immunohistochemistry Image:



Immunohistochemical staining using BrdU antibody (LS-C140474) on mouse intestine from mice treated with BrdU.

Requested From:

Japan

Laboratory Reagent For In Vitro Research Use Only

Not for resale without prior written consent from LifeSpan BioSciences, Inc.

Created on 9/25/2014

© 2014 LifeSpan BioSciences