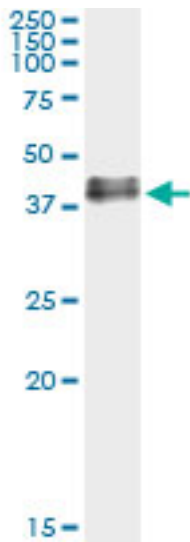


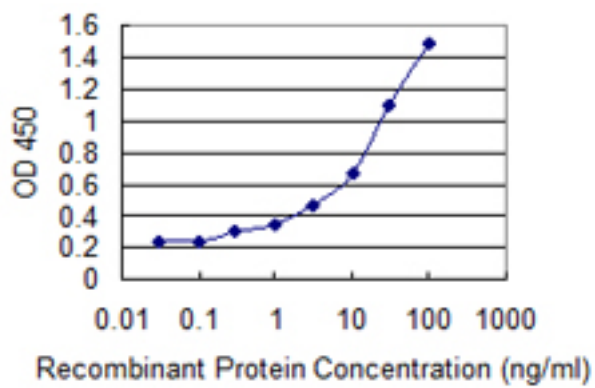
ADORA2A/Adenosine A2A Receptor Mouse anti-Human Monoclonal (4E4) Antibody - LS-C139333 - LSBio	
<b>CatalogID:</b>	LS-C139333
<b>Target:</b>	adenosine A2a receptor (ADORA2A)
<b>Synonyms:</b>	ADORA2A Antibody, Adenosine receptor A2a Antibody, ADORA2 Antibody, A2a receptor Antibody, Adenosine A2a receptor Antibody, Adenosine A2 receptor Antibody, Adenosine receptor subtype A2a Antibody, HA2aR Antibody, RDC8 Antibody
<b>Family / Subfamily:</b>	GPCR / Adenosine
<b>Host</b>	ADORA2A antibody was produced in Mouse
<b>Clonality:</b>	Monoclonal
<b>Isotype:</b>	IgG1,k
<b>Clone Name:</b>	4E4
<b>Immunogen Species:</b>	ADORA2A/Adenosine A2A Receptor antibody was raised against Human
<b>Antigen Type:</b>	Recombinant protein
<b>Immunogen:</b>	ADORA2A/Adenosine A2A Receptor antibody was raised against aDORA2A (NP_000666.2, 147 a.a. ~ 267 a.a) partial recombinant protein with GST tag. MW of the GST tag alone is 26 KDa.
<b>Specificity:</b>	Human ADORA2A
<b>Reactivity:</b>	Human
<b>Purification:</b>	Protein A purified
<b>Presentation:</b>	PBS, pH 7.2
<b>Recommended Storage:</b>	Store at -20°C or lower. Aliquot to avoid repeated freezing and thawing.
<b>Usage Summary:</b>	Sandwich ELISA: Recombinant protein. Western Blot: Recombinant protein.
<b>Uses:</b>	Western blot, Immunoprecipitation, ELISA (Optimal dilution to be determined by the researcher)
<b>Size:</b>	100 µg

**Immunoprecipitation Image:**



Immunoprecipitation of ADORA2A transfected lysate using anti-ADORA2A monoclonal antibody and Protein A Magnetic Bead.

**ELISA Image:**



Detection limit for recombinant GST tagged ADORA2A is 1 ng/ml as a capture antibody.

**Requested From:**

Japan

Laboratory Reagent For In Vitro Research Use Only

Not for resale without prior written consent from LifeSpan BioSciences, Inc.

Created on 9/25/2014

© 2014 LifeSpan BioSciences