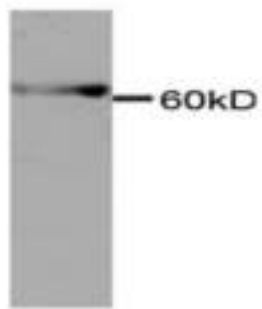


ENO1 / Alpha Enolase Mouse anti-Human Monoclonal Antibody - LS-C137598 - LSBio	
<b>CatalogID:</b>	LS-C137598
<b>Target:</b>	enolase 1, (alpha) (ENO1)
<b>Synonyms:</b>	ENO1 Antibody, Alpha Enolase Antibody, Alpha enolase like 1 Antibody, ENO1L1 Antibody, Enolase 1 Antibody, MBP-1 Antibody, MBPB1 Antibody, MPB1 Antibody, MYC promoter-binding protein 1 Antibody, NNE Antibody, Phosphopyruvate hydratase Antibody, Alpha-enolase Antibody, Tau-crystallin Antibody, MBP1 Antibody, MPB-1 Antibody, C-myc promoter-binding protein Antibody, Enolase 1, (alpha) Antibody, Enolase-alpha Antibody, Non-neural enolase Antibody, Plasminogen-binding protein Antibody, PPH Antibody
<b>Host</b>	ENO1 antibody was produced in Mouse
<b>Clonality:</b>	Monoclonal
<b>Isotype:</b>	IgG1
<b>Immunogen Species:</b>	ENO1 / Alpha Enolase antibody was raised against Human
<b>Antigen Type:</b>	Recombinant protein
<b>Immunogen:</b>	ENO1 / Alpha Enolase antibody was raised against recombinant protein corresponding to full length Alpha-enolase
<b>Specificity:</b>	Anti-Alpha-enolase recognizes recombinant protein Alpha-enolase.
<b>Reactivity:</b>	Human
<b>Purification:</b>	Affinity purified
<b>Presentation:</b>	Citrate-Tris-HCl buffer, pH 7.0, 0.02% Proclin 300
<b>Recommended Storage:</b>	Store at -20°C for up to one year.
<b>Uses:</b>	Western blot (1:1000), ELISA (Optimal dilution to be determined by the researcher)
<b>Size:</b>	100 µl

**Western Blot Image:**



**Requested From:**

Japan

Laboratory Reagent For In Vitro Research Use Only

Not for resale without prior written consent from LifeSpan BioSciences, Inc.

Created on 9/25/2014

© 2014 LifeSpan BioSciences