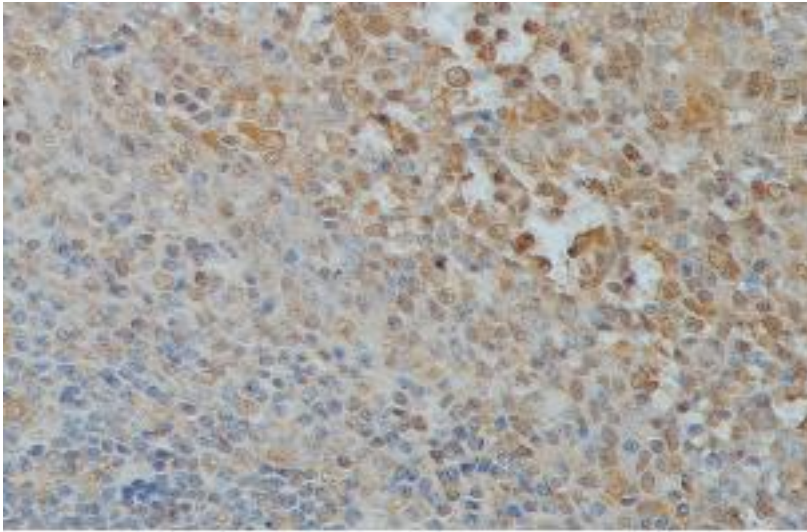


MKI67 / Ki67 Rabbit anti-Human Polyclonal Antibody - LS-C137260 - LSBio

CatalogID:	LS-C137260
Target:	marker of proliferation Ki-67 (MKI67)
Synonyms:	MKI67 Antibody, Antigen KI-67 Antibody, Ki67 Antibody, KIA Antibody
Host	MKI67 antibody was produced in Rabbit
Clonality:	Polyclonal
Isotype:	IgG
Immunogen Species:	MKI67 / Ki67 antibody was raised against Human
Antigen Type:	Recombinant protein
Immunogen:	MKI67 / Ki67 antibody was raised against recombinant protein
Reactivity:	Human, Mouse
Purification:	Affinity purified
Presentation:	PBS, pH 7.4, 0.02% sodium azide
Recommended Storage:	Store at -20°C for up to one year.
Uses:	IHC, Western blot (Optimal dilution to be determined by the researcher)
Size:	100 µl
Concentration:	1 mg/ml

Immunohistochemistry Image:



Immunohistochemical staining of formalin-fixed paraffin-embedded fetal tonsil showing nuclear staining with anti-Ki67 antibody at a dilution of 1/100.

Western Blot Image:



Western Blot analysis of Raji cell Lysate with anti-Ki67 antibody

WB 1:500

Requested From:

Japan

Laboratory Reagent For In Vitro Research Use Only

Not for resale without prior written consent from LifeSpan BioSciences, Inc.

Created on 9/25/2014

© 2014 LifeSpan BioSciences