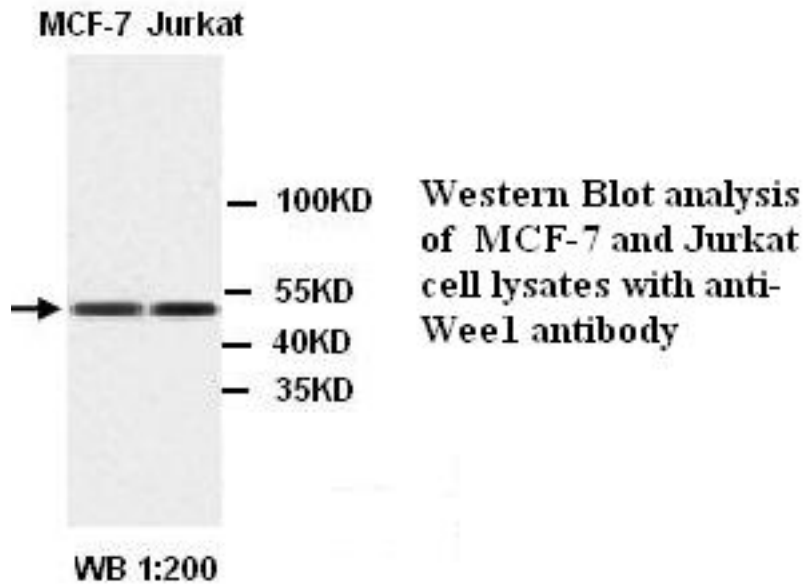


**ENO1 / Alpha Enolase Rabbit anti-Human Polyclonal Antibody - LS-C137016 - LSBio**

<b>CatalogID:</b>	LS-C137016
<b>Target:</b>	enolase 1, (alpha) (ENO1)
<b>Synonyms:</b>	ENO1 Antibody, Alpha Enolase Antibody, Alpha enolase like 1 Antibody, ENO1L1 Antibody, Enolase 1 Antibody, MBP-1 Antibody, MBPB1 Antibody, MPB1 Antibody, MYC promoter-binding protein 1 Antibody, NNE Antibody, Phosphopyruvate hydratase Antibody, Alpha-enolase Antibody, Tau-crystallin Antibody, MBP1 Antibody, MPB-1 Antibody, C-myc promoter-binding protein Antibody, Enolase 1, (alpha) Antibody, Enolase-alpha Antibody, Non-neural enolase Antibody, Plasminogen-binding protein Antibody, PPH Antibody
<b>Host</b>	ENO1 antibody was produced in Rabbit
<b>Clonality:</b>	Polyclonal
<b>Isotype:</b>	IgG
<b>Immunogen Species:</b>	ENO1 / Alpha Enolase antibody was raised against Human
<b>Antigen Type:</b>	Synthetic peptide - KLH conjugated
<b>Immunogen:</b>	ENO1 / Alpha Enolase antibody was raised against synthetic peptide conjugated to KLH
<b>Specificity:</b>	Not yet tested in other species.
<b>Reactivity:</b>	Human
<b>Purification:</b>	Affinity purified
<b>Presentation:</b>	PBS, pH 7.4, 0.02% sodium azide
<b>Recommended Storage:</b>	Store at -20°C for up to one year.
<b>Uses:</b>	IHC (1:100 - 1:500), Western blot (1:200 - 1:1000), ELISA (1:1000 - 1:10000) (Optimal dilution to be determined by the researcher)
<b>Size:</b>	100 µl

**Western Blot Image:**



**Requested From:**

Japan

Laboratory Reagent For In Vitro Research Use Only

Not for resale without prior written consent from LifeSpan BioSciences, Inc.

Created on 9/25/2014

© 2014 LifeSpan BioSciences