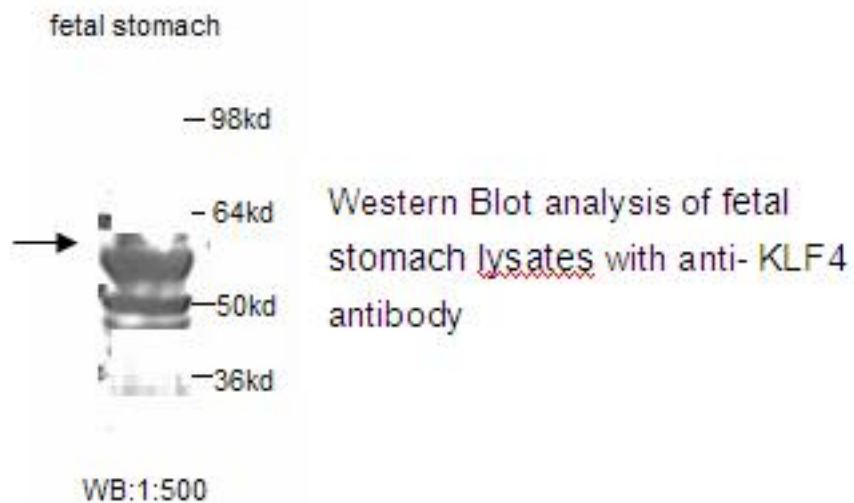


KLF4 Rabbit anti-Human Polyclonal Antibody - LS-C136894 - LSBio	
<b>CatalogID:</b>	LS-C136894
<b>Target:</b>	Kruppel-like factor 4 (gut) (KLF4)
<b>Synonyms:</b>	KLF4 Antibody, EZF Antibody, GKLF Antibody, Kruppel-like factor 4 (gut) Antibody, Hezf Antibody, Krueppel-like factor 4 Antibody
<b>Host</b>	KLF4 antibody was produced in Rabbit
<b>Clonality:</b>	Polyclonal
<b>Isotype:</b>	IgG
<b>Immunogen Species:</b>	KLF4 antibody was raised against Human
<b>Antigen Type:</b>	Synthetic peptide - KLH conjugated
<b>Immunogen:</b>	KLF4 antibody was raised against synthetic peptide conjugated to KLH
<b>Specificity:</b>	KLF4 antibody detects endogenous levels of KLF4 protein. Not tested with other proteins.
<b>Reactivity:</b>	Human, Mouse, Rat
<b>Purification:</b>	Protein A purified
<b>Presentation:</b>	PBS, pH 7.4, 0.05% sodium azide
<b>Recommended Storage:</b>	Store at -20°C for up to one year.
<b>Uses:</b>	Western blot (1:500), ELISA (1:80000) (Optimal dilution to be determined by the researcher)
<b>Size:</b>	100 µl

**Western Blot Image:**

This antibody, under reducing conditions, identifies a band of approximately 55-60 KD in fetal stomach lysates.



**Requested From:**

Japan

Laboratory Reagent For In Vitro Research Use Only

Not for resale without prior written consent from LifeSpan BioSciences, Inc.

Created on 9/25/2014

© 2014 LifeSpan BioSciences