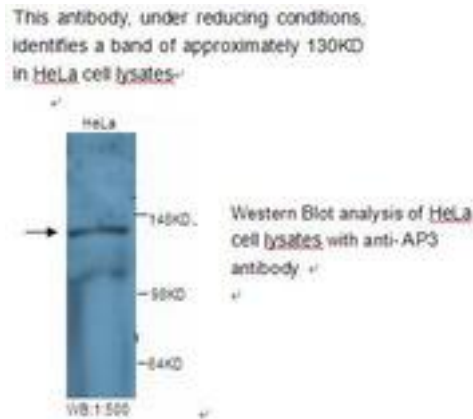


AP3D1 / AP3 Rabbit anti-Human Polyclonal Antibody - LS-C136880 - LSBio

CatalogID:	LS-C136880
Target:	adaptor-related protein complex 3, delta 1 subunit (AP3D1)
Synonyms:	AP3D1 Antibody, ADTD Antibody, Adaptin, delta Antibody, AP-3 complex subunit delta Antibody, AP-3 complex subunit delta-1 Antibody, Delta adaptin Antibody, Delta-adaptin Antibody, Delta-adaptin, partial CDS Antibody, Ap-3 complex delta subunit Antibody, HBLVR Antibody
Host	AP3D1 antibody was produced in Rabbit
Clonality:	Polyclonal
Isotype:	IgG
Immunogen Species:	AP3D1 / AP3 antibody was raised against Human
Antigen Type:	Synthetic peptide - KLH conjugated
Immunogen:	AP3D1 / AP3 antibody was raised against synthetic peptide conjugated to KLH
Specificity:	AP3 antibody detects endogenous levels of AP3 protein. Not tested with other proteins.
Reactivity:	Human
Purification:	Purified
Presentation:	PBS, pH 7.4, 0.05% sodium azide
Recommended Storage:	Store at -20°C for up to one year.
Uses:	Western blot (1:500), ELISA (1:40000) (Optimal dilution to be determined by the researcher)
Size:	100 µl

Western Blot Image:



Requested From: Japan

Laboratory Reagent For In Vitro Research Use Only

Not for resale without prior written consent from LifeSpan BioSciences, Inc.

Created on 9/25/2014

© 2014 LifeSpan BioSciences