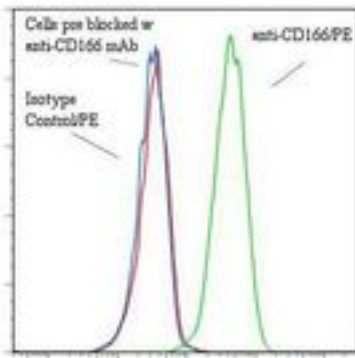


ALCAM / CD166 Mouse anti-Human Monoclonal (RPE) (3A6) Antibody - LS-C134792 - LSBio

CatalogID:	LS-C134792
Target:	activated leukocyte cell adhesion molecule (ALCAM)
Synonyms:	ALCAM Antibody, CD166 antigen Antibody, MEMD Antibody, CD166 Antibody
Host	ALCAM antibody was produced in Mouse
Clonality:	Monoclonal
Isotype:	IgG1
Clone Name:	3A6
Conjugations:	R. Phycoerythrin (RPE)
Immunogen Species:	ALCAM / CD166 antibody was raised against Human
Antigen Type:	Cells
Immunogen:	ALCAM / CD166 antibody was raised against human thymic epithelial cells.
Specificity:	CD166 molecule of 100 kd.
Reactivity:	Human
Purification:	Gel filtration
Presentation:	50 mM sodium phosphate, pH 7.5, 500 mM potassium chloride, 150 mM sodium chloride, 15% Glycerol, 0.2% BSA, 0.04% sodium azide
Recommended Storage:	Store at +4°C. Do not freeze. Product is photosensitive and should be protected from light.
Usage Summary:	Function: Blocks binding of CD6 to CD166.
Uses:	Flow Cytometry, Functional Assay (Optimal dilution to be determined by the researcher)
Size:	120 tst

Flow Cytometry Image:

Binding of anti-CD166/PE to human Raji cells



Flow cytometry of ALCAM / CD166 antibody

Requested From:

Japan

Laboratory Reagent For In Vitro Research Use Only

Not for resale without prior written consent from LifeSpan BioSciences, Inc.

Created on 9/25/2014

© 2014 LifeSpan BioSciences