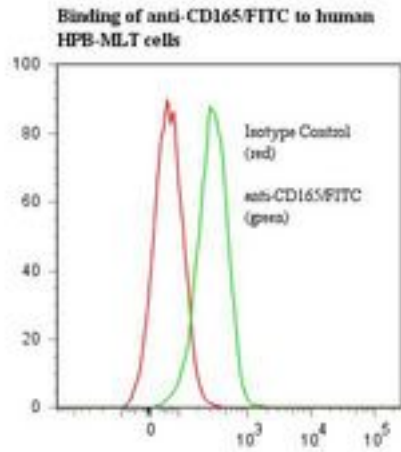


CD165 Mouse anti-Human Monoclonal (FITC) (AD2) Antibody - LS-C134786 - LSBio

CatalogID:	LS-C134786
Target:	CD165
Host	CD165 antibody was produced in Mouse
Clonality:	Monoclonal
Isotype:	IgG1
Clone Name:	AD2
Conjugations:	Fluorescein (FITC)
Immunogen Species:	CD165 antibody was raised against Human
Antigen Type:	Cells
Immunogen:	CD165 antibody was raised against hSB cells.
Specificity:	CD165 molecule of 37 kd.
Reactivity:	Human
Purification:	Protein A purified
Presentation:	50 mM sodium phosphate, pH 7.5, 100 mM potassium chloride, 150 mM sodium chloride, 5% Glycerol, 0.2% BSA, 0.04% sodium azide
Recommended Storage:	Store at +4°C. Do not freeze. Product is photosensitive and should be protected from light.
Usage Summary:	Function: Blocks the function of CD165.
Uses:	Flow Cytometry, Functional Assay (Optimal dilution to be determined by the researcher)
Size:	120 tst

Flow Cytometry Image:



Flow cytometry of CD165 antibody

Requested From:

Japan

Laboratory Reagent For In Vitro Research Use Only

Not for resale without prior written consent from LifeSpan BioSciences, Inc.

Created on 9/25/2014

© 2014 LifeSpan BioSciences