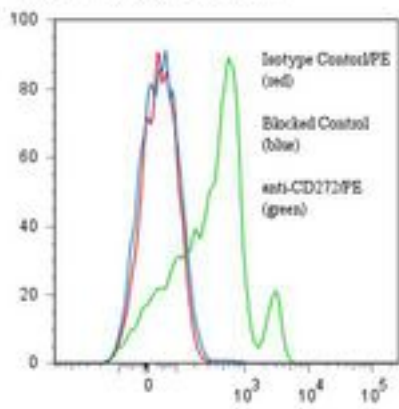


BTLA / CD272 Mouse anti-Human Monoclonal (RPE) (ANC5A5) Antibody - LS-C134773 - LSBio	
<b>CatalogID:</b>	LS-C134773
<b>Target:</b>	B and T lymphocyte associated (BTLA)
<b>Synonyms:</b>	BTLA Antibody, BTLA1 Antibody, B and T lymphocyte associated Antibody, CD272 Antibody, B and T lymphocyte attenuator Antibody, B- and T-lymphocyte attenuator Antibody, CD272 antigen Antibody
<b>Host</b>	BTLA antibody was produced in Mouse
<b>Clonality:</b>	Monoclonal
<b>Isotype:</b>	IgG1,k
<b>Clone Name:</b>	ANC5A5
<b>Conjugations:</b>	R. Phycoerythrin (RPE)
<b>Immunogen Species:</b>	BTLA / CD272 antibody was raised against Human
<b>Immunogen:</b>	BTLA / CD272 antibody was raised against recombinant extracellular human CD272.
<b>Specificity:</b>	CD272 on the cell surface of human PBMC in Flow cytometry, and to recombinant CD272-mulg in EIA.
<b>Reactivity:</b>	Human
<b>Purification:</b>	Gel filtration
<b>Presentation:</b>	50 mM sodium phosphate, pH 7.5, 500 mM potassium chloride, 150 mM sodium chloride, 15% Glycerol, 0.2% BSA, 0.04% sodium azide
<b>Recommended Storage:</b>	Store at +4°C. Do not freeze. Product is photosensitive and should be protected from light.
<b>Usage Summary:</b>	ELISA: Detection.
<b>Uses:</b>	Flow Cytometry, ELISA (Optimal dilution to be determined by the researcher)
<b>Size:</b>	120 tst

**Flow Cytometry Image:**

Binding of anti-CD272/PE (clone ANC5A5) to human PBMC (lymphoid gate)



Flow cytometry of BTLA / CD272 antibody

**Requested From:**

Japan

Laboratory Reagent For In Vitro Research Use Only

Not for resale without prior written consent from LifeSpan BioSciences, Inc.

Created on 9/25/2014

© 2014 LifeSpan BioSciences