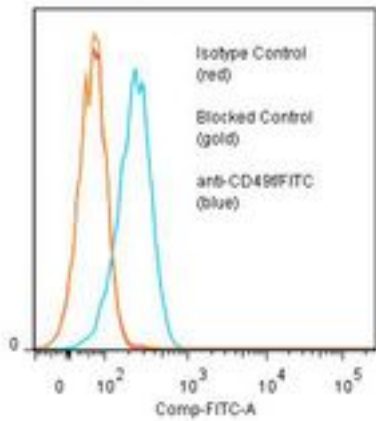


ITGA6/Integrin Alpha 6/CD49f Mouse anti-Human Monoclonal (FITC) (BQ16) Antibody - LS-C134739 - LSBio	
CatalogID:	LS-C134739
Target:	integrin, alpha 6 (ITGA6)
Synonyms:	ITGA6 Antibody, CD49f Antibody, CD49f antigen Antibody, Integrin alpha6B Antibody, Integrin, alpha 6 Antibody, Integrin alpha-6 precursor Antibody, VLA-6 Antibody, Integrin alpha-6 Antibody, ITGA6B Antibody
Family / Subfamily:	Integrin / not assigned-Integrin
Host	ITGA6 antibody was produced in Mouse
Clonality:	Monoclonal
Isotype:	IgG1
Clone Name:	BQ16
Conjugations:	Fluorescein (FITC)
Immunogen Species:	ITGA6/Integrin Alpha 6/CD49f antibody was raised against Human
Immunogen:	ITGA6/Integrin Alpha 6/CD49f antibody was raised against uM-UC-9, human bladder cancer cells.
Specificity:	CD49f molecule of about 150 kd.
Reactivity:	Human
Purification:	Protein A purified
Presentation:	50 mM sodium phosphate, pH 7.5, 100 mM potassium chloride, 150 mM sodium chloride, 5% Glycerol, 0.2% BSA, 0.04% sodium azide
Recommended Storage:	Store at +4°C. Do not freeze. Product is photosensitive and should be protected from light.
Uses:	IHC, Western blot, Flow Cytometry (Optimal dilution to be determined by the researcher)
Size:	120 tst

Flow Cytometry Image:

Binding of anti-CD49f/FITC to human Raji cells



Flow cytometry of ITGA6/Integrin Alpha 6/CD49f antibody

Requested From:

Japan

Laboratory Reagent For In Vitro Research Use Only

Not for resale without prior written consent from LifeSpan BioSciences, Inc.

Created on 9/25/2014

© 2014 LifeSpan BioSciences